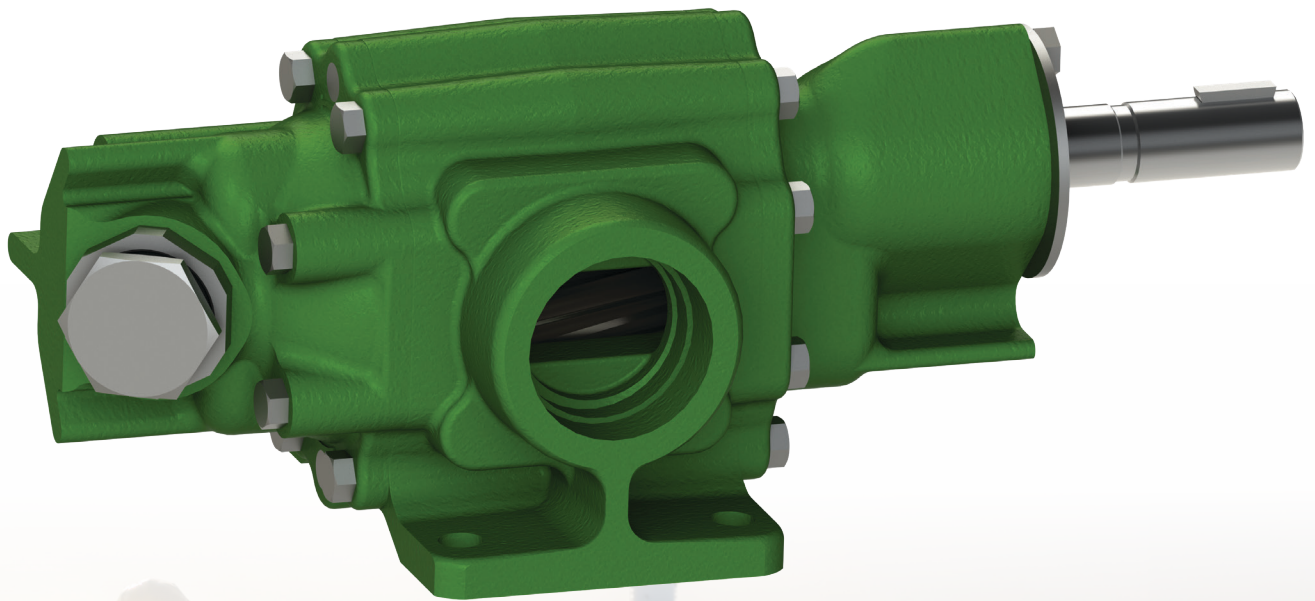




THE LEADING FORCE behind liquids™ since 1857

A SERIES

GENERAL PURPOSE PUMPS



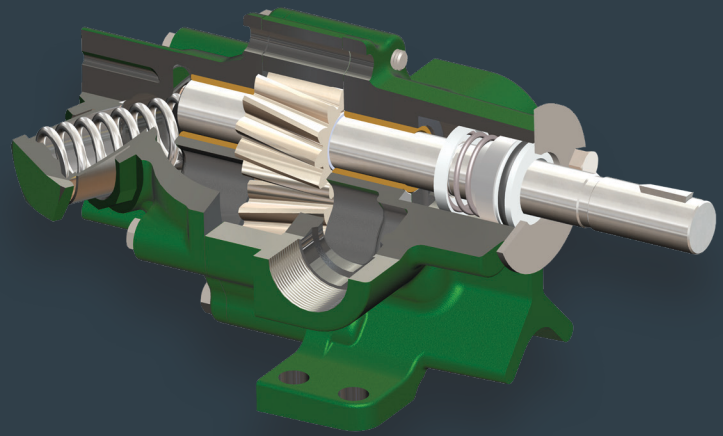
PRESSURE LUBRICATION • HYDRAULIC SERVICE • FUEL SUPPLY • GENERAL TRANSFER



A Series

General Purpose Pumps

GENERAL PURPOSE PUMPS FOR PRESSURE LUBRICATION, HYDRAULIC SERVICE, FUEL SUPPLY AND GENERAL TRANSFER UP TO 75 GPM - UP TO 300 PSI



A Series pumps are adaptable to a wide range of applications for pumping clean fluids, such as pressure lubrication, hydraulic service, fuel supply, or general liquid transfer.

A Series pumps are designed to operate at standard motor speeds, with provisions for flange or foot mounting. The C-faced flanged mounted pumps allow for a compact footprint while ensuring proper alignment with the motor. Due to the helical design of the gears, the tooth profile is much stronger than conventional spur gears and runs quietly.

MATERIALS OF CONSTRUCTION* STANDARD FITTED

Housings	Cast Iron
Gears	Ductile Iron* / Hardened Steel**
Bearings	Bronze
Idler Shafts.....	Ductile Iron* / Steel**
Drive Shafts.....	Hardened Steel

OPTIONAL MATERIALS**

Housing.....	Ductile Iron***
Bearings	Iron / Carbon

*06 and larger sizes. **03 and smaller sizes. ***In 005, 01 and 02 sizes

PRIMARY FEATURES

QUIET-RUNNING HELICAL GEARS

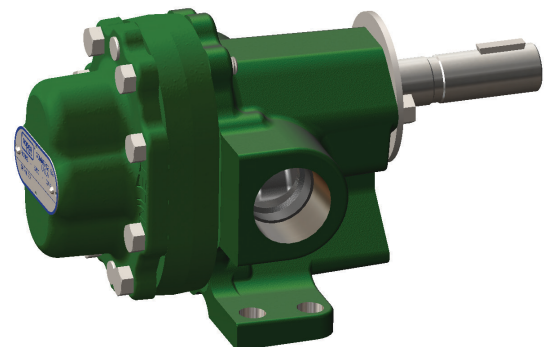
- Designed to operate at standard motor speeds
- Stronger tooth profile than spur gears
- Bi-directional rotation
- Proper meshing
- Reduced friction and vibration
- Quiet, efficient operation
- Long life

MAINTENANCE-FRIENDLY DESIGN

- All castings are cast iron. Ductile is also available.
- Precise manufacturing tolerances provide minimum clearances for maximum pumping efficiency.
- Large, hardened steel dowel pins insure positive alignment between the faceplate, case, and backplate.

LONG-LASTING BEARING SURFACES

- Bearings are special wear-resistant, high-lead bronze. (Iron and carbon bearings are available.)
- Four heavy duty sleeve bearings give positive support to pumping gears and insure long, efficient service.



CAPACITIES & NOMENCLATURE

NOMENCLATURE — A SERIES

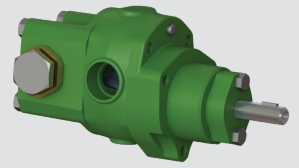
Model	1 - Foot Mounted	25 - Baseplate Mounted
	2 - Foot Mounted with Relief Valve	26 - Baseplate Mounted with Relief Valve
	17 - Flange Mounted	33 - Close Coupled
	18 - Flange Mounted with Relief Valve	34 - Close Coupled with Relief Valve
Seal Option	AL - Lip Seal	
	AM - Mechanical Seal	
	AP - Packed Box	
	AE - Mechanical Seal (AE Series Only)	
Size AL, AM, AP	005 - 0.05 Gal /100 Rev [0.19 L /100 Rev]	12 - 1.3 Gal /100 Rev [4.92 L / Rev]
	01 - 0.1 Gal /100 Rev [0.38 L /100 Rev]	16 - 1.7 Gal /100 Rev [6.44 L / Rev]
	02 - 0.2 Gal /100 Rev [0.76 L /100 Rev]	21 - 2.2 Gal /100 Rev [8.33 L / Rev]
	03 - 0.3 Gal /100 Rev [1.14 L /100 Rev]	27 - 2.7 Gal /100 Rev [10.22 L / Rev]
	06 - 0.6 Gal /100 Rev [2.27 L /100 Rev]	32 - 3.3 GAL /100 REV [12.49 L / REV]
	08 - 0.9 Gal /100 Rev [3.41 L / Rev]	40 - 4.2 Gal /100 Rev [15.90 L / Rev]
	Size AE Series	19 - 1.9 Gal /100 Rev [7.19 L / Rev]
29 - 2.9 GAL /100 REV [10.98 L / REV]		75 - 7.5 GAL /100 REV [28.39 L /100 REV]

*Size: approximate theoretical flow rate [not including slip]

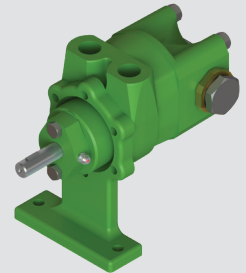
EXAMPLE: 17AM32	17 Model	AM Seal Option	32 Size	Type 1 Internal Construction
EXAMPLE: 2AE54	2 Model	AE Seal Option	54 Size	Type 1 Internal Construction

SIZE 005 THROUGH 02

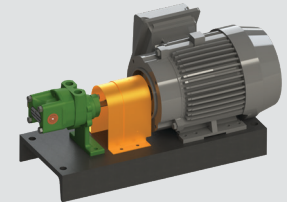
Flange Mounted



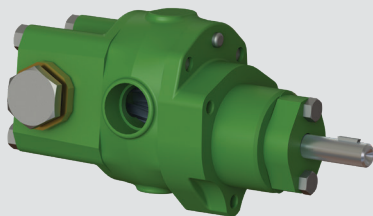
With Mounting Bracket



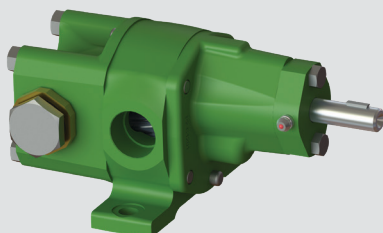
Baseplate Unit



SIZE 03

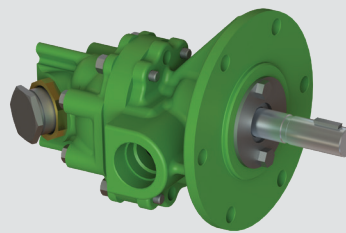


Flange Mounted

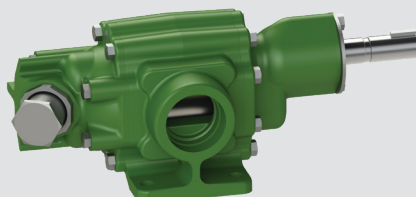


Foot Mounted

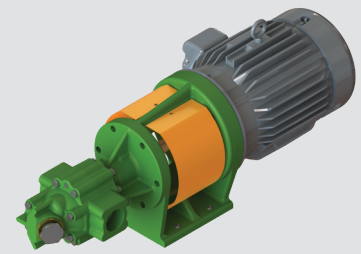
SIZE 06 THROUGH 40



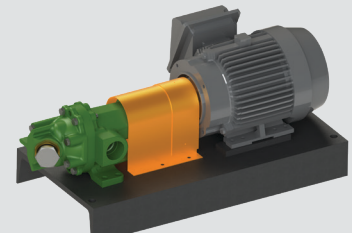
Flange Mounted



Foot Mounted



Close Coupled to NEMA "C" Motor



Baseplate Mounted

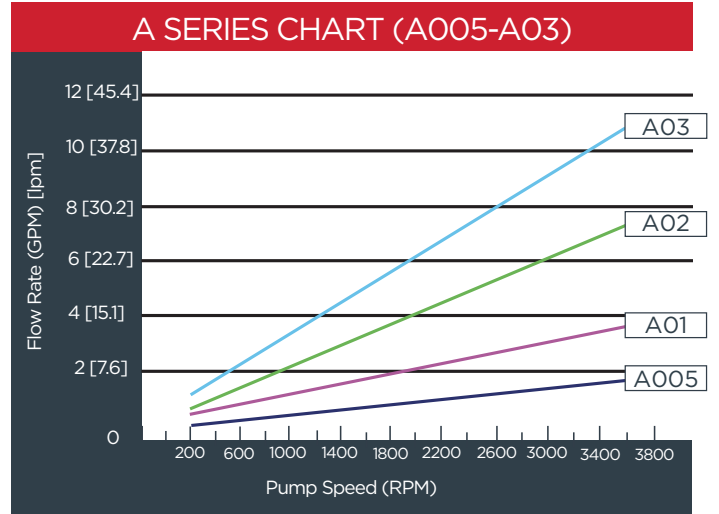
PERFORMANCE CHARTS

SIZE		RPM		3600 RPM				1800 RPM				1200 RPM			
Pump	PSI [bar]	SSU	30	100	1000	5000	30	100	1000	5000	30	100	1000	5000	30
005	50 [3.5]	GPM [lpm] HP [kw]	1.62 [6.1] 0.41 [0.3]	1.78 [6.7] 0.32 [0.2]	1.83 [6.9] 0.53 [0.4]	1.83 [6.9] 0.84 [0.6]	0.7 [2.6] 0.17 [0.1]	0.87 [3.3] 0.14 [0.1]	0.91 [3.4] 0.21 [0.2]	0.91 [3.4] 0.34 [0.3]	0.39 [1.5] 0.06 [0.0]	0.56 [2.1] 0.06 [0.0]	0.61 [2.3] 0.13 [0.1]	0.61 [2.3] 0.21 [0.2]	0.24 [0.9] 0.05 [0.0]
	150 [10.3]	GPM [lpm] HP [kw]	1.3 [4.9] 0.8 [0.6]	1.71 [6.5] 0.47 [0.4]	1.83 [6.9] 0.64 [0.5]	1.83 [6.9] 0.95 [0.7]	0.38 [1.4] 0.33 [0.2]	0.79 [3.0] 0.21 [0.2]	0.91 [3.4] 0.26 [0.2]	0.91 [3.4] 0.39 [0.3]		0.48 [1.8] 0.1 [0.1]	0.61 [2.3] 0.15 [0.1]	0.61 [2.3] 0.24 [0.2]	
	300 [20.7]	GPM [lpm] HP [kw]		1.62 [6.1] 0.69 [0.5]	1.82 [6.9] 0.8 [0.6]	1.83 [6.9] 1.1 [0.8]		0.9 [3.4] 0.34 [0.3]	0.91 [3.4] 0.47 [0.4]		0.39 [1.5] 0.15 [0.1]	0.61 [2.3] 0.2 [0.2]	0.61 [2.3] 0.3 [0.2]		
01	50 [3.5]	GPM [lpm] HP [kw]	3.4 [12.9] 0.36 [0.3]	3.55 [13.4] 0.4 [0.3]	3.59 [13.6] 0.7 [0.5]	3.59 [13.6] 1.1 [0.8]	1.6 [6.1] 0.14 [0.1]	1.75 [6.6] 0.16 [0.1]	1.79 [6.8] 0.26 [0.2]	1.79 [6.8] 0.39 [0.3]	1 [3.8] 0.09 [0.1]	1.15 [4.4] 0.09 [0.1]	1.19 [4.5] 0.15 [0.1]	1.19 [4.5] 0.26 [0.2]	0.7 [2.6] 0.06 [0.0]
	150 [10.3]	GPM [lpm] HP [kw]	2.99 [11.3] 0.8 [0.6]	3.44 [13.0] 0.68 [0.5]	3.59 [13.6] 0.91 [0.7]	3.59 [13.6] 1.28 [1.0]	1.19 [4.5] 0.32 [0.2]	1.64 [6.2] 0.29 [0.2]	1.79 [6.8] 0.37 [0.3]	1.79 [6.8] 0.5 [0.4]		1.04 [3.9] 0.16 [0.1]	1.19 [4.5] 0.22 [0.2]	1.19 [4.5] 0.33 [0.2]	
	300 [20.7]	GPM [lpm] HP [kw]		3.26 [12.3] 1.03 [0.8]	3.58 [13.6] 1.23 [0.9]	3.59 [13.6] 1.6 [1.2]		1.46 [5.5] 0.45 [0.3]	1.78 [6.7] 0.52 [0.4]	1.79 [6.8] 0.65 [0.5]		0.86 [3.3] 0.27 [0.2]	1.18 [4.5] 0.33 [0.2]	1.19 [4.5] 0.44 [0.3]	
02	50 [3.5]	GPM [lpm] HP [kw]	7.01 [26.5] 0.48 [0.4]	7.35 [27.8] 0.52 [0.4]	7.53 [28.5] 0.82 [0.6]	7.55 [28.6] 1.19 [0.9]	3.23 [12.2] 0.2 [0.1]	3.57 [13.5] 0.22 [0.2]	3.75 [14.2] 0.32 [0.2]	3.77 [14.3] 0.45 [0.3]	1.97 [7.5] 0.13 [0.1]	2.31 [8.7] 0.13 [0.1]	2.49 [9.4] 0.19 [0.1]	2.51 [9.5] 0.3 [0.2]	1.34 [5.1] 0.09 [0.1]
	150 [10.3]	GPM [lpm] HP [kw]	6.26 [23.7] 1.15 [0.9]	7.09 [26.8] 1.03 [0.8]	7.48 [28.3] 1.26 [0.9]	7.54 [28.5] 1.63 [1.2]	2.48 [9.4] 0.5 [0.4]	3.31 [12.5] 0.46 [0.3]	3.7 [14.0] 0.54 [0.4]	3.76 [14.2] 0.67 [0.5]		2.05 [7.8] 0.28 [0.2]	2.44 [9.2] 0.34 [0.3]	2.51 [9.5] 0.45 [0.3]	
	300 [20.7]	GPM [lpm] HP [kw]		5.8 [22.0] 1.7 [1.3]	7.42 [28.1] 1.92 [1.4]	7.52 [28.5] 2.29 [1.7]		2.96 [11.2] 0.8 [0.6]	3.64 [13.8] 0.87 [0.6]	3.74 [14.2] 1 [0.7]		1.7 [6.4] 0.5 [0.4]	2.38 [9.0] 0.56 [0.4]	2.5 [9.5] 0.67 [0.5]	
03	50 [3.5]	GPM [lpm] HP [kw]	10.42 [39.4] 0.7 [0.5]	11.05 [41.8] 0.68 [0.5]	11.41 [43.2] 0.94 [0.7]	11.49 [43.5] 1.29 [1.0]	4.66 [17.6] 0.34 [0.3]	5.29 [20.0] 0.33 [0.2]	5.65 [21.4] 0.45 [0.3]	5.73 [21.7] 0.62 [0.5]	2.74 [10.4] 0.2 [0.1]	3.37 [12.8] 0.2 [0.1]	3.73 [14.1] 0.29 [0.2]	3.82 [14.5] 0.46 [0.3]	1.78 [6.7] 0.15 [0.1]
	150 [10.3]	GPM [lpm] HP [kw]	9.3 [35.2] 1.6 [1.2]	10 [37.9] 1.6 [1.2]	11.32 [42.9] 1.61 [1.2]	11.45 [43.3] 1.96 [1.5]	3.66 [13.9] 0.85 [0.6]	4.83 [18.3] 0.68 [0.5]	5.56 [21.0] 0.77 [0.6]	5.69 [21.5] 0.94 [0.7]		2.91 [11.0] 0.41 [0.3]	3.64 [13.8] 0.5 [0.4]	3.8 [14.4] 0.67 [0.5]	
	300 [20.7]	GPM [lpm] HP [kw]		9.5 [36.0] 2.6 [1.9]	11.21 [42.4] 2.61 [1.9]	11.41 [43.2] 2.96 [2.2]		3.8 [14.4] 1.3 [1.0]	5.45 [20.6] 1.25 [0.9]	5.65 [21.4] 1.42 [1.1]		2.44 [9.2] 0.74 [0.6]	3.53 [13.4] 0.83 [0.6]	3.78 [14.3] 1 [0.7]	

SIZE		RPM		1800 RPM				1200 RPM				900 RPM			
Pump	PSI [bar]	SSU	30	100	1000	5000	30	100	1000	5000	30	100	1000	5000	10,000
06	50 [3.5]	GPM [l/min] HP [kw]	10.6 [40.1] 0.88 [0.7]	10.9 [41.3] 0.88 [0.7]	11.2 [42.4] 1.33 [1.0]	11.2 [42.4] 2.08 [1.6]	6.8 [25.7] 0.48 [0.4]	7.1 [26.9] 0.48 [0.4]	7.4 [28.0] 0.7 [0.5]	7.5 [28.4] 1.04 [0.8]	4.9 [18.5] 0.34 [0.3]	5.2 [19.7] 0.34 [0.3]	5.5 [20.8] 0.49 [0.4]	5.6 [21.2] 0.71 [0.5]	5.6 [21.2] 0.85 [0.6]
	100 [6.9]	GPM [l/min] HP [kw]	9.8 [37.1] 1.21 [0.9]	10.4 [39.4] 1.21 [0.9]	11 [41.6] 1.66 [1.2]	11.1 [42.0] 2.41 [1.8]	6 [22.7] 0.7 [0.5]	6.7 [25.4] 0.7 [0.5]	7.2 [27.3] 0.92 [0.7]	7.4 [28.0] 1.26 [0.9]	4.1 [15.5] 0.5 [0.4]	4.8 [18.2] 0.5 [0.4]	5.3 [20.1] 0.65 [0.5]	5.5 [20.8] 0.87 [0.6]	5.5 [20.8] 1.01 [0.8]
	150 [10.3]	GPM [l/min] HP [kw]	8.7 [32.9] 1.54 [1.1]	9.8 [37.1] 1.54 [1.1]	10.8 [40.9] 1.99 [1.5]	11 [41.6] 2.74 [2.0]	6 [22.7] 0.92 [0.7]	7 [26.5] 1.14 [0.9]	7.3 [27.6] 1.48 [1.1]	7.3 [27.6] 1.48 [1.1]	4.1 [15.5] 0.67 [0.5]	5.1 [19.3] 0.82 [0.6]	5.4 [20.4] 1.04 [0.8]	5.4 [20.4] 1.18 [0.9]	5.4 [20.4] 1.18 [0.9]
08	50 [3.5]	GPM [l/min] HP [kw]	15.5 [58.7] 1.7 [1.3]	15.8 [59.8] 1.7 [1.3]	16.1 [60.9] 1.7 [1.3]	16.1 [60.9] 2.1 [1.6]	10.1 [38.2] 0.6 [0.4]	10.4 [39.4] 0.6 [0.4]	10.7 [40.5] 0.8 [0.6]	10.7 [40.5] 1.2 [0.9]	7.4 [28.0] 0.4 [0.3]	7.7 [29.1] 0.4 [0.3]	8 [30.3] 0.6 [0.4]	8 [30.3] 0.8 [0.6]	8.1 [30.7] 0.9 [0.7]
	100 [6.9]	GPM [l/min] HP [kw]	14.6 [55.3] 2.2 [1.6]	15.3 [57.9] 2.2 [1.6]	15.9 [60.2] 2.2 [1.6]	16 [60.6] 2.6 [1.9]	9.2 [34.8] 1 [0.7]	9.9 [37.5] 1 [0.7]	10.5 [39.7] 1.1 [0.8]	10.6 [40.1] 1.5 [1.1]	6.5 [24.6] 0.6 [0.4]	7.2 [27.3] 0.6 [0.4]	7.8 [29.5] 0.8 [0.6]	7.9 [29.9] 1 [0.7]	8 [30.3] 1.1 [0.8]
	150 [10.3]	GPM [l/min] HP [kw]	13.6 [51.5] 2.6 [1.9]	14.7 [55.6] 2.6 [1.9]	15.7 [59.4] 2.6 [1.9]	16 [60.6] 3.1 [2.3]	8.2 [31.0] 1.3 [1.0]	9.3 [35.2] 1.3 [1.0]	10.3 [39.0] 1.5 [1.1]	10.6 [40.1] 1.8 [1.3]	6.6 [25.0] 0.9 [0.7]	7.6 [28.8] 1 [0.7]	7.9 [29.9] 1.2 [0.9]	7.9 [29.9] 1.8 [1.3]	7.9 [29.9] 1.8 [1.3]
12	50 [3.5]	GPM [l/min] HP [kw]	21.4 [81.0] 1.7 [1.3]	22.2 [84.0] 1.8 [1.3]	23 [87.1] 2.3 [1.7]	23.2 [87.8] 2.6 [2.0]	13.6 [51.5] 0.9 [0.7]	14.4 [54.5] 1 [0.7]	15.2 [57.5] 1.2 [0.9]	15.4 [58.3] 1.5 [1.1]	9.7 [36.7] 0.6 [0.4]	10.5 [39.7] 0.6 [0.4]	11.3 [42.8] 0.8 [0.6]	11.5 [43.5] 1 [0.7]	11.6 [43.9] 1.2 [0.9]
	100 [6.9]	GPM [l/min] HP [kw]	19.9 [75.3] 2.3 [1.7]	21.4 [81.0] 2.5 [1.9]	22.7 [85.9] 3 [2.2]	23 [87.1] 3.4 [2.5]	12.1 [45.8] 1.3 [1.0]	13.6 [51.5] 1.4 [1.0]	14.9 [56.4] 1.6 [1.2]	15.2 [57.5] 2 [1.5]	9.7 [36.7] 1 [0.7]	11 [41.6] 1.1 [0.8]	11.3 [42.8] 1.4 [1.0]	11.4 [43.2] 1.5 [1.1]	11.4 [43.2] 1.5 [1.1]
	150 [10.3]	GPM [l/min] HP [kw]	18.4 [69.7] 3 [2.2]	20.5 [77.6] 3.2 [2.4]	22.4 [84.8] 3.7 [2.8]	22.9 [86.7] 4.1 [3.1]	12.7 [48.1] 1.9 [1.4]	14.6 [55.3] 2.1 [1.6]	15.1 [57.2] 2.4 [1.8]	15.1 [57.2] 2.4 [1.8]	8.8 [33.3] 1.3 [1.0]	10.7 [40.5] 1.4 [1.0]	11.2 [42.4] 1.7 [1.3]	11.3 [42.8] 1.9 [1.4]	11.3 [42.8] 1.9 [1.4]
16	50 [3.5]	GPM [l/min] HP [kw]	27.8 [105.2] 2.1 [1.6]	29.2 [110.5] 2.3 [1.7]	30.4 [115.1] 2.6 [1.9]	30.8 [116.6] 3.4 [2.5]	17.4 [65.9] 1.2 [0.9]	18.8 [71.2] 1.3 [1.0]	20.1 [76.1] 1.4 [1.0]	20.4 [77.2] 1.8 [1.3]	12.2 [46.2] 0.8 [0.6]	13.6 [51.5] 0.8 [0.6]	14.9 [56.4] 1 [0.7]	15.2 [57.5] 1.3 [1.0]	15.3 [57.9] 1.5 [1.1]
	100 [6.9]	GPM [l/min] HP [kw]	25.7 [97.3] 3 [2.2]	28 [106.0] 3.2 [2.4]	30 [115.6] 3.5 [2.6]	30.6 [115.8] 4.3 [3.2]	17.6 [66.6] 1.9 [1.9]	19.6 [74.2] 2 [1.5]	20.2 [76.5] 2.4 [1.8]	20.2 [76.5] 2.4 [1.8]	12.4 [46.9] 1.3 [1.0]	14.4 [54.5] 1.4 [1.0]	15 [56.8] 1.8 [1.3]	15.2 [57.5] 2 [1.5]	15.2 [57.5] 2 [1.5]
	150 [10.3]	GPM [l/min] HP [kw]		26.8 [101.4] 4.1 [3.1]	29.6 [112.0] 4.4 [3.3]	30.4 [115.1] 5.2 [3.9]	16.5 [62.5] 2.5 [1.9]	19.2 [72.7] 2.6 [1.9]	20 [75.7] 3 [2.2]	20 [75.7] 3 [2.2]	11.3 [42.8] 1.7 [1.3]	14 [53.0] 1.9 [1.4]	14.8 [56.0] 2.1 [1.6]	15 [56.8] 2.1 [1.6]	15 [56.8] 2.1 [1.6]
21	50 [3.5]	GPM [l/min] HP [kw]	34.5 [130.6] 2.7 [2.0]	36.6 [138.5] 2.8 [2.1]	38.5 [145.7] 3 [2.2]	39.1 [148.0] 4.1 [3.1]	21.3 [80.6] 1.5 [1.1]	23.4 [88.6] 1.6 [1.2]	25.3 [95.8] 1.7 [1.3]	25.9 [98.0] 2.4 [1.8]	14.7 [55.6] 1.1 [0.8]	16.8 [63.6] 1.1 [0.8]	18.7 [70.8] 1.2 [0.9]	19.3 [73.1] 1.7 [1.3]	19.4 [73.4] 2 [1.5]
	100 [6.9]	GPM [l/min] HP [kw]	31.7 [120.0] 3.8 [2.8]	35 [132.5] 3.9 [2.9]	37.9 [143.5] 4.1 [3.1]	38.8 [146.9] 5.3 [4.0]	21.8 [82.5] 2.4 [1.8]	24.7 [93.5] 2.5 [1.9]	25.6 [96.9] 3.2 [2.4]	25.6 [96.9] 3.2 [2.4]	15.2 [57.5] 1.7 [1.3]	18.1 [68.5] 1.8 [1.3]	19 [71.9] 2.3 [1.7]	19.2 [72.7] 2.5 [1.9]	19.2 [72.7] 2.5 [1.9]
	150 [10.3]	GPM [l/min] HP [kw]		33.4 [126.4] 5.1 [3.8]	37.4 [141.6] 5.3 [4.0]	38.5 [145.7] 6.4 [4.8]	20.2 [76.5] 3.1 [2.3]	24.2 [91.6] 3.3 [2.5]	25.3 [95.8] 4 [3.0]	25.3 [95.8] 4 [3.0]	17.6 [66.6] 1.4 [1.0]	18.7 [70.8] 1.4 [1.0]	19.3 [73.1] 1.7 [1.3]	19.3 [73.1] 2.1 [1.6]	19.3 [73.1] 2.1 [1.6]
27	50 [3.5]	GPM [l/min] HP [kw]	42.6 [161.3] 3.3 [2.5]	45.5 [172.2] 3.3 [2.5]	48.1 [182.1] 3.5 [2.6]	48.8 [184.7] 4.9 [3.7]	26.1 [98.8] 1.9 [1.4]	29 [109.8] 2 [1.5]	31.6 [119.6] 2.1 [1.6]	32.3 [122.3] 2.9 [2.2]	17.9 [67.8] 1.4 [1.0]	20.8 [78.7] 1.4 [1.0]	23.3 [88.2] 1.6 [1.2]	24 [90.8] 2.1 [1.6]	24.2 [91.6] 2.5 [1.9]
	100 [6.9]	GPM [l/min] HP [kw]		43.4 [164.3] 4.7 [3.5]	47.3 [179.0] 4.9 [3.7]	48.4 [183.2] 6.3 [4.7]	26.9 [101.8] 2.9 [2.2]	30.8 [116.6] 3.1 [2.3]	31.9 [120.8] 3.9 [2.9]	31.9 [120.8] 3.9 [2.9]	18.7 [70.8] 2.1 [1.6]	22.6 [85.6] 2.3 [1.7]	23.7 [89.7] 2.8 [2.1]	24 [90.8] 3.2 [2.4]	24 [90.8] 3.2 [2.4]
	150 [10.3]	GPM [l/min] HP [kw]		41.4 [156.7] 6.2 [4.6]	46.6 [176.4] 6.3 [4.7]	48.1 [182.1] 7.7 [5.7]		30.1 [113.9] 4 [3.0]	31.6 [119.6] 4.8 [3.6]	31.6 [119.6] 4.8 [3.6]	21.9 [82.9] 3 [2.2]	23.3 [88.2] 3.5 [2.6]	23.3 [88.2] 3.5 [2.6]	23.7 [89.7] 3.9 [2.9]	23.7 [89.7] 3.9 [2.9]
32	50 [3.5]	GPM [l/min] HP [kw]	50.8 [192.3] 3.9 [2.9]	54.3 [205.5] 3.9 [2.9]	57.6 [218.0] 4.1 [3.1]	58.5 [221.4] 5.7 [4.3]	31 [117.3] 2.3 [1.7]	34.5 [130.6] 2.3 [1.7]	37.8 [143.1] 2.5 [1.9]	38.7 [146.5] 3.4 [2.5]		24.6 [93.1] 1.7 [1.3]	27.9 [105.6] 1.8 [1.3]	28.8 [109.0] 2.5 [1.9]	29.1 [110.2] 2.9 [2.2]
	100 [6.9]	GPM [l/min] HP [kw]		51.8 [196.1] 5.6 [4.2]	57.6 [218.0] 5.8 [4.3]	58.1 [219.9] 7.5 [5.6]		32 [121.1] 3.5 [2.6]	36.9 [139.7] 3.7 [2.8]	38.3 [145.0] 4.6 [3.4]		22.1 [83.7] 2.5 [1.9]	27 [102.2] 2.7 [2.0]	28.4 [107.5] 3.3 [2.5]	28.7 [108.6] 3.7 [2.8]
	150 [10.3]	GPM [l/min] HP [kw]		49.4 [187.0] 7.3 [5.4]	55.8 [211.2] 7.5 [5.6]	57.7 [218.4] 9.2 [6.9]		36 [136.3] 4.85 [3.6]	37.9 [143.5] 5.85 [4.3]	37.9 [143.5] 5.85 [4.3]		26.1 [98.8] 3.5 [2.6]	28 [106.0] 4.2 [3.1]	28.4 [107.5] 4.6 [3.4]	28.4 [107.5] 4.6 [3.4]
40	50 [3.5]	GPM [l/min] HP [kw]	66.5 [251.7] 4.6 [3.4]	70.3 [266.1] 4.8 [3.6]	73.7 [279.0] 5.8 [4.3]	74.7 [282.8] 9.1 [6.8]	41.3 [156.3] 2.8 [2.1]	45.1 [170.7] 3 [2.2]	48.5 [183.6] 3.3 [2.5]	49.5 [187.4] 4.9 [3.7]	32.5 [123.0] 2.1 [1.6]	35.9 [135.9] 2.3 [1.7]	36.9 [139.7] 3.2 [2.4]	37.2 [140.8] 4 [3.0]	37.2 [140.8] 4 [3.0]
	100 [6.9]	GPM [l/min] HP [kw]		67.3 [254.8] 6.9 [5.1]	72.7 [275.2] 7.9 [5.9]	74.1 [280.5] 11.2 [8.4]		42.1 [159.4] 4.4 [3.3]	47.5 [179.						

PERFORMANCE CHARTS

900 RPM			720 RPM				SIZE
100	1000	5000	30	100	1000	5000	Pump
0.41 [1.6] 0.05 [0.0]	0.45 [1.7] 0.09 [0.1]	0.45 [1.7] 0.15 [0.1]	0.15 [0.6] 0.04 [0.0]	0.32 [1.2] 0.04 [0.0]	0.36 [1.4] 0.06 [0.0]	0.36 [1.4] 0.12 [0.1]	005
0.33 [1.2] 0.08 [0.1]	0.45 [1.7] 0.11 [0.1]	0.45 [1.7] 0.18 [0.1]		0.24 [0.9] 0.06 [0.0]	0.36 [1.4] 0.09 [0.1]	0.36 [1.4] 0.14 [0.1]	01
0.24 [0.9] 0.12 [0.1]	0.44 [1.7] 0.15 [0.1]	0.45 [1.7] 0.22 [0.2]			0.35 [1.3] 0.12 [0.1]	0.36 [1.4] 0.17 [0.1]	02
0.85 [3.2] 0.06 [0.0]	0.89 [3.4] 0.15 [0.1]	0.89 [3.4] 0.18 [0.1]	0.52 [2.0] 0.05 [0.0]	0.67 [2.5] 0.05 [0.0]	0.71 [2.7] 0.07 [0.1]	0.71 [2.7] 0.13 [0.1]	03
0.74 [2.8] 0.11 [0.1]	0.89 [3.4] 0.15 [0.1]	0.89 [3.4] 0.23 [0.2]		0.56 [2.1] 0.09 [0.1]	0.71 [2.7] 0.12 [0.1]	0.71 [2.7] 0.17 [0.1]	04
0.56 [2.1] 0.19 [0.1]	0.88 [3.3] 0.23 [0.2]	0.89 [3.4] 0.31 [0.2]		0.38 [1.4] 0.15 [0.1]	0.7 [2.6] 0.18 [0.1]	0.71 [2.7] 0.24 [0.2]	05
1.68 [6.4] 0.09 [0.1]	1.86 [7.0] 0.21 [0.2]	1.88 [7.1] 0.21 [0.2]	0.96 [3.6] 0.07 [0.1]	1.3 [4.9] 0.07 [0.1]	1.48 [5.6] 0.1 [0.1]	1.5 [5.7] 0.15 [0.1]	06
1.42 [5.4] 0.2 [0.1]	1.81 [6.9] 0.24 [0.2]	1.88 [7.1] 0.32 [0.2]		1.04 [3.9] 0.16 [0.1]	1.44 [5.5] 0.19 [0.1]	1.5 [5.7] 0.24 [0.2]	07
1.07 [4.1] 0.37 [0.3]	1.75 [6.6] 0.4 [0.3]	1.87 [7.1] 0.48 [0.4]			1.37 [5.2] 0.32 [0.2]	1.49 [5.6] 0.37 [0.3]	08
2.41 [9.1] 0.15 [0.1]	2.77 [10.5] 0.21 [0.2]	2.86 [10.8] 0.34 [0.3]	1.2 [4.5] 0.12 [0.1]	1.83 [6.9] 0.12 [0.1]	2.19 [8.3] 0.17 [0.1]	2.28 [8.6] 0.27 [0.2]	09
1.95 [7.4] 0.31 [0.2]	2.68 [10.1] 0.37 [0.3]	2.84 [10.8] 0.5 [0.4]		1.37 [5.2] 0.25 [0.2]	2.1 [7.9] 0.3 [0.2]	2.26 [8.6] 0.4 [0.3]	10
1.48 [5.6] 0.55 [0.4]	2.57 [9.7] 0.6 [0.4]	2.82 [10.7] 0.7 [0.5]			1.99 [7.5] 0.5 [0.4]	2.24 [8.5] 0.6 [0.4]	11

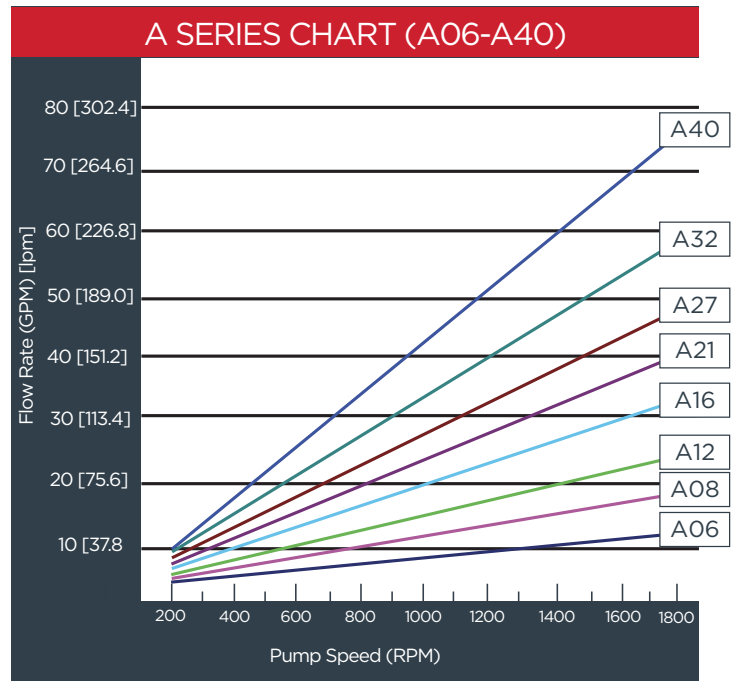


Performance Charts

Performance figures show maximum horsepower requirements for minimum rated gallons per minute at the various speeds, viscosities, and pressures. The charts are intended as a guide for conditions at the pump. In determining the proper conditions of operation for the pump, many factors must be considered including inlet conditions, liquid characteristics, and temperature.

If there is any question concerning these charts or the recommended operating conditions, please consult your Roper distributor, district representative, or the home office.

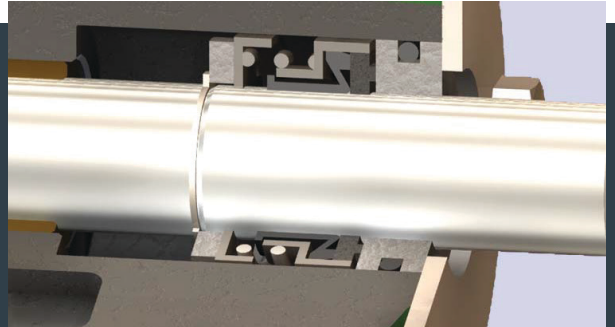
720 RPM					SIZE
30	100	1000	5000	10,000	Pump
3.8 [14.4] 0.25 [0.2]	4.1 [15.5] 0.25 [0.2]	4.4 [16.7] 0.35 [0.3]	4.4 [16.7] 0.48 [0.4]	4.5 [17.0] 0.57 [0.4]	06
	3.6 [13.6] 0.38 [0.3]	4.2 [15.9] 0.48 [0.4]	4.4 [16.7] 0.61 [0.5]	4.4 [16.7] 0.7 [0.5]	07
5.8 [22.0] 0.3 [0.2]	6.1 [23.1] 0.3 [0.2]	6.3 [23.8] 0.4 [0.3]	6.4 [24.2] 0.6 [0.4]	6.4 [24.2] 0.6 [0.4]	08
4.9 [18.5] 0.4 [0.3]	5.6 [21.2] 0.5 [0.4]	6.2 [23.5] 0.6 [0.4]	6.3 [23.8] 0.7 [0.5]	6.4 [24.2] 0.8 [0.6]	09
	5 [18.9] 0.7 [0.5]	6 [22.7] 0.8 [0.6]	6.2 [23.5] 0.9 [0.7]	6.3 [23.8] 1 [0.7]	10
7.4 [28.0] 0.4 [0.3]	8.2 [31.0] 0.5 [0.4]	8.9 [33.7] 0.6 [0.4]	9.2 [34.8] 0.8 [0.6]	9.2 [34.8] 0.9 [0.7]	11
	7.3 [27.6] 0.7 [0.5]	8.6 [32.6] 0.8 [0.6]	9 [34.1] 1 [0.7]	9.1 [34.4] 1.2 [0.9]	12
	6.4 [24.2] 1 [0.7]	8.3 [31.4] 1.1 [0.8]	8.9 [33.7] 1.3 [1.0]	9 [34.1] 1.4 [1.0]	13
9.1 [34.4] 0.6 [0.4]	10.5 [39.7] 0.6 [0.4]	11.8 [44.7] 0.7 [0.5]	12.1 [45.8] 1 [0.7]	12.2 [46.2] 1.1 [0.8]	14
	9.3 [35.2] 1 [0.7]	11.3 [42.8] 1.1 [0.8]	11.9 [45.0] 1.3 [1.0]	12.1 [45.8] 1.5 [1.1]	15
		10.9 [41.3] 1.5 [1.1]	11.7 [44.3] 1.7 [1.3]	11.9 [45.0] 1.9 [1.4]	16
	12.8 [48.5] 0.8 [0.6]	14.8 [56.0] 0.9 [0.7]	15.3 [57.9] 1.3 [1.0]	15.6 [59.1] 1.5 [1.1]	17
	11.2 [42.4] 1.3 [1.0]	14.2 [53.8] 1.4 [1.0]	15 [56.8] 1.7 [1.3]	15.2 [57.5] 1.9 [1.4]	18
	15.8 [59.8] 1 [0.7]	18.4 [69.7] 1.2 [0.9]	19.1 [72.3] 1.6 [1.2]	19.3 [73.1] 1.8 [1.3]	19
		17.6 [66.6] 1.8 [1.3]	18.7 [70.8] 2.2 [1.6]	19 [71.9] 2.4 [1.8]	20
		16.9 [64.0] 2.3 [1.7]	18.4 [69.7] 2.7 [2.0]	18.8 [71.2] 3.1 [2.3]	21
	18.7 [70.8] 1.3 [1.0]	22 [83.3] 1.4 [1.0]	22.9 [86.7] 1.9 [1.4]	23.1 [87.4] 2.2 [1.6]	22
		21.1 [79.9] 2.1 [1.6]	22.4 [84.8] 2.6 [1.9]	22.8 [86.3] 2.9 [2.2]	23
		20.2 [76.5] 2.8 [2.1]	22 [83.3] 3.3 [2.5]	22.5 [85.2] 3.6 [2.7]	24
	24.94 [94.4] 1.5 [1.1]	28.3 [107.1] 1.6 [1.2]	29.3 [110.9] 2.3 [1.7]	29.6 [112.0] 2.8 [2.1]	25
		27.3 [103.3] 2.6 [1.9]	28.7 [108.6] 3.3 [2.5]	29.2 [110.5] 3.8 [2.8]	26
		26.5 [100.3] 3.5 [2.6]	28.4 [107.5] 4.2 [3.1]	28.9 [109.4] 4.7 [3.5]	27



PUMP SEALS

MECHANICAL SEAL (STANDARD)

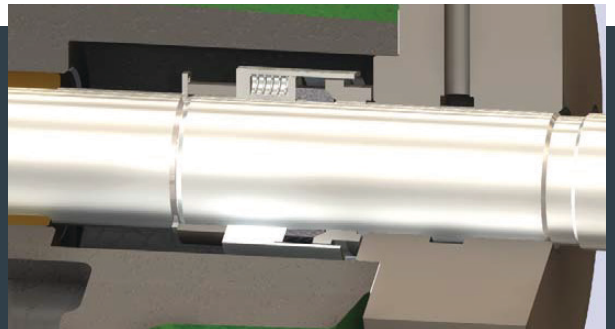
Mechanical seals are for those applications where product leakage is unacceptable. The mechanical seal uses less power than the packed box, and under proper conditions, has a longer service life. It does not require adjustment. Our standard mechanical seal is an elastomeric bellows type seal, with a temperature limit of 212°F (100°C)*. Special fitting is available for higher temperature applications.



* Always consult Roper Pump Company to select the best options for your application.

MECHANICAL SEAL (POSITIVE DRIVEN)

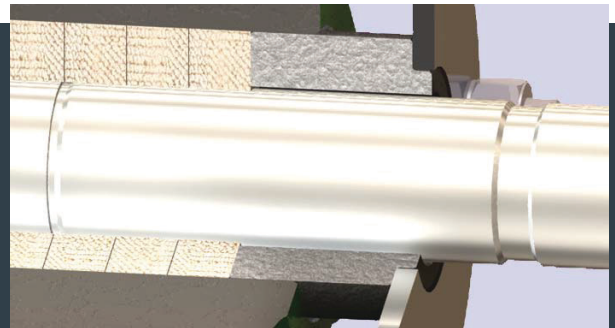
These are positive driven seals with a PTFE wedge, for use where corrosive and/or viscous liquids are being processed. Wedge construction of the secondary sealing element virtually eliminates leakage. These seals have a temperature limit of 450°F (232°C)*. Special fitting is available for higher temperature applications.



* Cast iron is only rated to 450°F. Ductile is rated to 600°F. You have to have very specific internals to meet these temperatures.

PACKED BOX

The packed box seal is suited for general purpose applications. The standard packing has a temperature limit of 250°F (121°C). The gland should be adjusted to allow slight seepage. Special fitting is available for higher temperature applications.



LIP SEAL

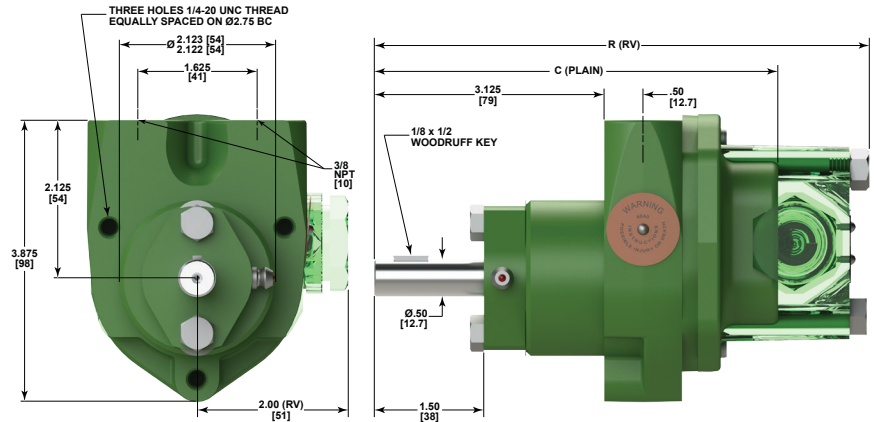
The lip seal is suitable for low pressure sealing of lubricating fluids. The standard seal has a temperature limit of 212°F (100°C). Available in CW rotation only and 100 psi maximum discharge. Special fitting is available for higher temperature applications.



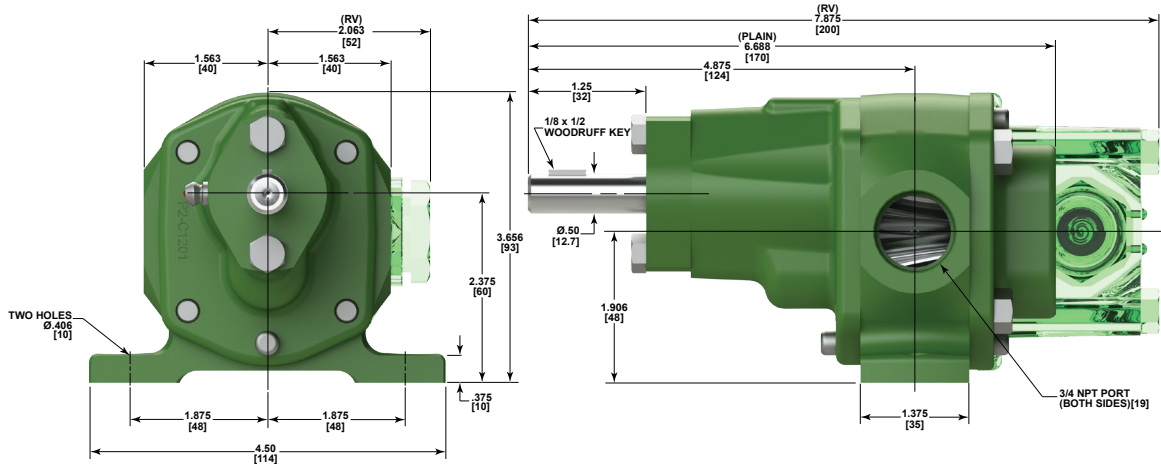
DIMENSIONS

SIZE 005 THROUGH 02 Flange Mounted

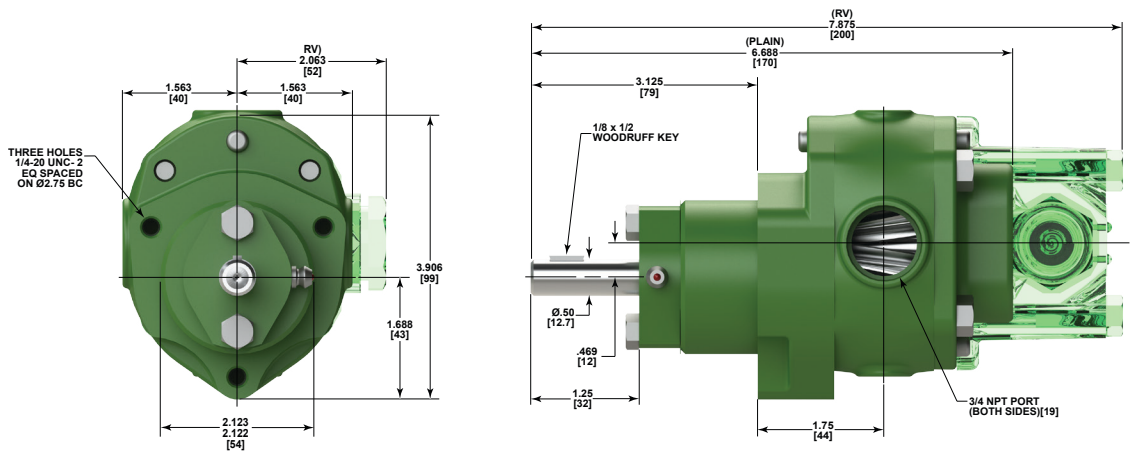
Pump	C	R	PUMP	C	R
17A-005	5.56 [141]		18A-01		6.94 [176]
18A-005		6.75 [171]	17A-02	6.19 [157]	
17A-01	5.81 [148]		18A-02		7.38 [187]



SIZE 03 Foot Mounted



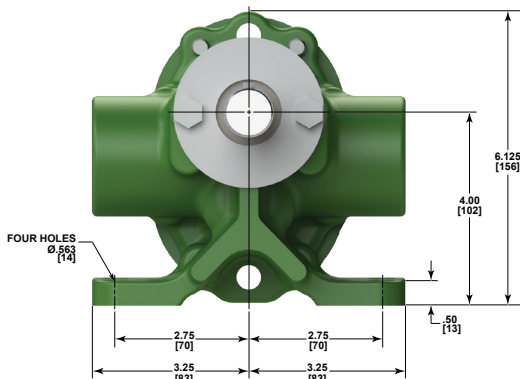
SIZE 03 Flange Mounted



DIMENSIONS

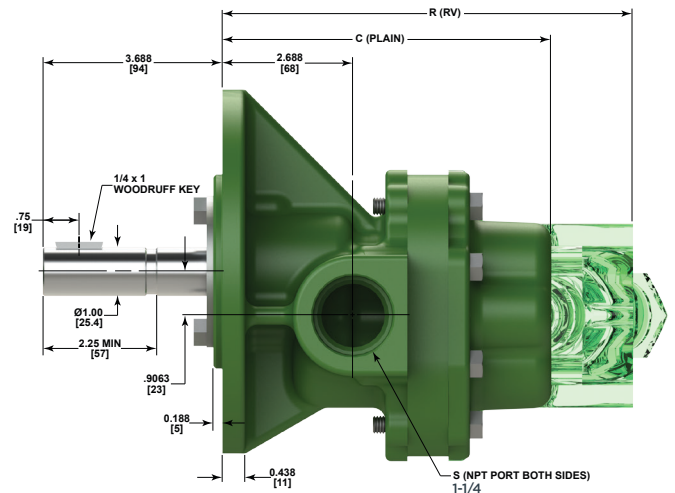
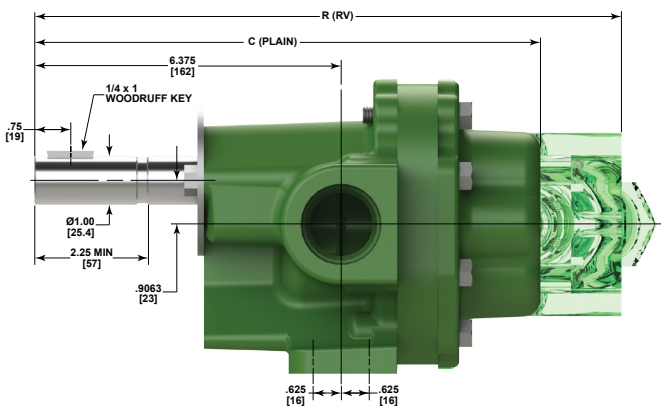
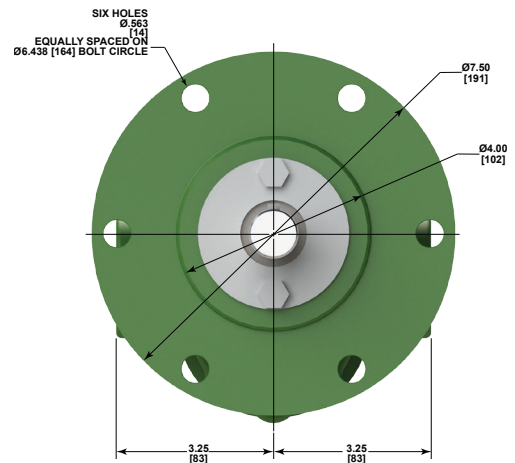
SIZE 06 THROUGH 16 Foot Mounted

Pump	C	R	PUMP	C	R
1A-06	10.47 [266]		1A-12	11.31 [273]	
2A-06		12.16 [309]	2A-12		13 [330]
1A-08	10.75 [273]		1A-16	11.88 [301]	
2A-08		12.44 [316]	2A-16		13.56 [344]



SIZE 06 THROUGH 16 Flange Mounted

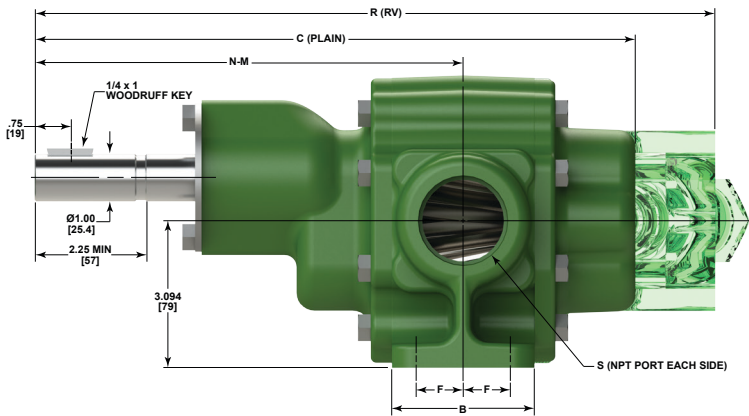
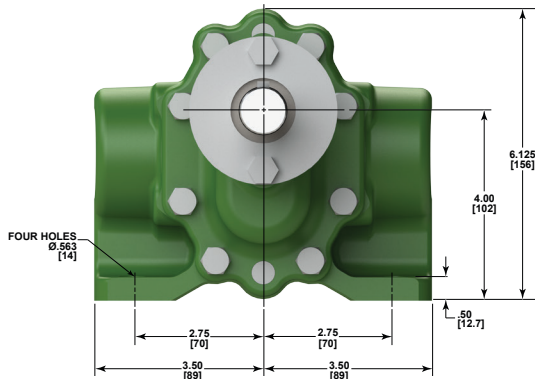
Pump	C	R	PUMP	C	R
17A-06	6.78 [172]		17A-12	7.63 [194]	
18A-06		8.47 [215]	18A-12		9.31 [237]
17A-08	7.06 [179]		17A-16	8.19 [208]	
18A-08		8.75 [222]	18A-16		9.75 [248]



DIMENSIONS

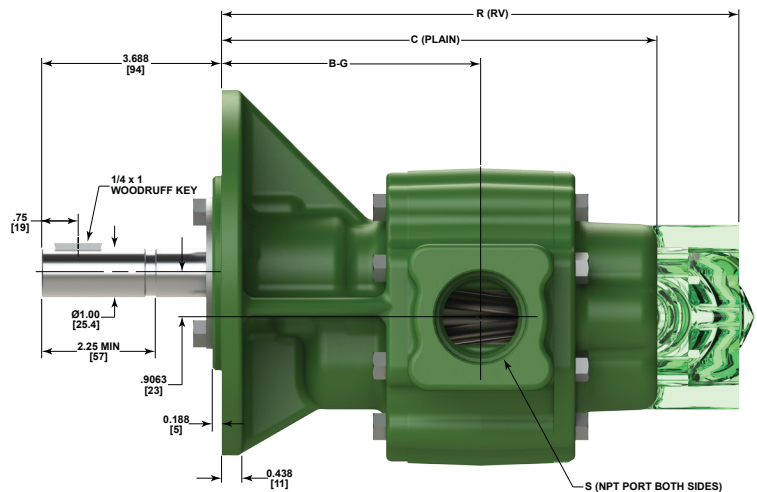
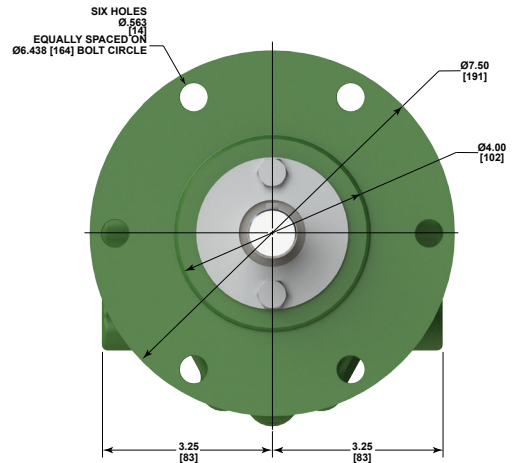
SIZE 21 THROUGH 40 Foot Mounted

Pump	B	C	F	N-M	R	S
1A-21	3 [76]	12.63 [321]	1 [25]	9 [229]		1.50 [38]
2A-21	3 [76]		1 [25]	9 [229]	14.31 [364]	1.50 [38]
1A-27	3.75 [95]	13.38 [340]	1.38 [35]	9.38 [238]		2 [51]
2A-27	3.75 [95]		1.38 [35]	9.38 [238]	15.06 [382]	2 [51]
1A-32	4.50 [114]	14.13 [359]	1.75 [44]	9.75 [248]		2 [51]
2A-32	4.50 [114]		1.75 [44]	9.75 [248]	15.81 [402]	2 [51]
1A-40	4.50 [114]	14.13 [359]	1.75 [44]	9.75 [248]		2 [51]
2A-40	4.50 [114]		1.75 [44]	9.75 [248]	15.81 [402]	2 [51]



SIZE 21 THROUGH 40 Flange Mounted

Pump	C	B-G	R	S
17A-21	8.94 [227]	5.31 [135]		1.50 [38]
18A-21		5.31 [135]	10.63 [270]	1.50 [38]
17A-27	9.69 [246]	5.69 [144]		2 [51]
18A-27		5.69 [144]	11.38 [289]	2 [51]
17A-32	10.44 [265]	6.06 [154]		2 [51]
18A-32		6.06 [154]	12.13 [308]	2 [51]
17A-40	10.44 [265]	6.06 [154]		2 [51]
18A-40		6.06 [154]	12.13 [308]	2 [51]



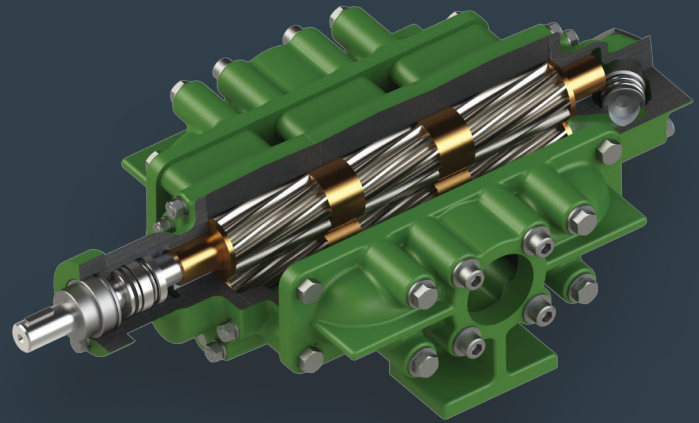


AE Series

GENERAL PURPOSE PUMPS FOR PRESSURE LUBRICATION, HYDRAULIC SERVICE, FUEL SUPPLY AND GENERAL TRANSFER UP TO 130 GPM UP TO 300 PSI

Roper AE Series pumps are well suited for applications where a compact and quiet unit is required, such as hydraulic lift applications. Bearings and wear-plates are special wear-resistant, high lead bronze. The pumping gears are accurately machined to run quietly and smoothly.

They can be operated at various speeds, depending on the conditions of installation.



MATERIALS OF CONSTRUCTION* STANDARD FITTED

- Housings Cast Iron
- Gears Hardened Steel
- Bearings Bronze
- Shafts Hardened Steel

PERFORMANCE CHARTS

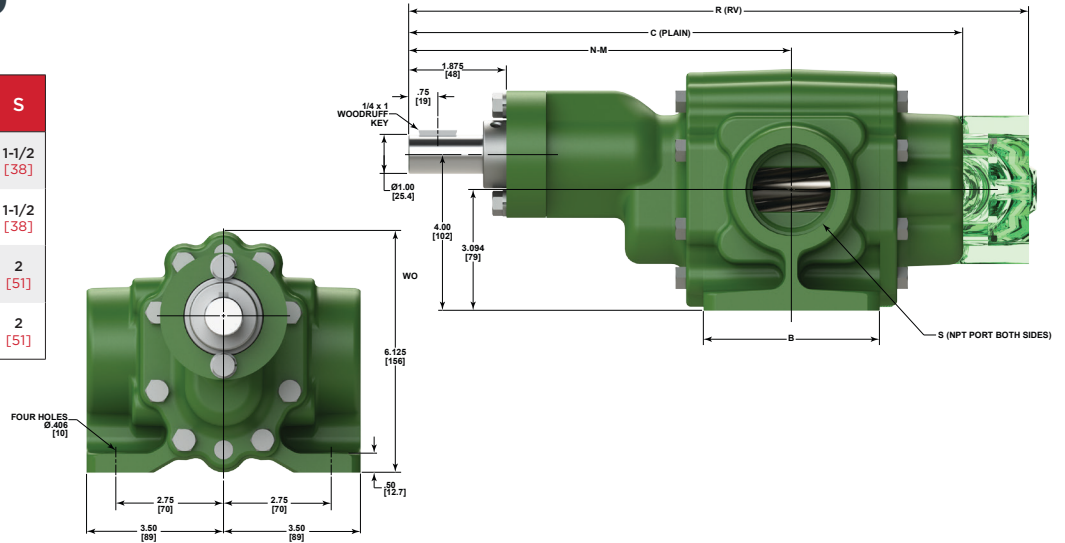
SIZE	RPM		3600 RPM			1800 RPM			1200 RPM				900 RPM				720 RPM				
	Pump	PSI [bar]	SSU	30	100	1000	30	100	1000	30	100	1000	10,000	30	100	1000	10,000	30	100	1000	10,000
19	50 [3.5]	GPM [l/min] HP [kw]		60 [227] 3.9 [2.9]	63 [238] 3.9 [2.9]	64 [242] 3.9 [5.1]	28 [106] 1.5 [1.1]	31 [117] 1.5 [1.1]	32 [121] 2.2 [1.6]	17 [64] 1.1 [0.8]	20 [76] 1.1 [0.8]	21 [79] 1.3 [1.0]	22 [83] 2.2 [1.6]	11 [42] 0.8 [0.6]	14 [53] 0.8 [0.6]	15 [57] 1.0 [0.7]	16 [61] 1.5 [1.1]	7 [26] 0.6 [0.4]	10 [38] 0.6 [0.4]	11 [42] 0.8 [0.6]	12 [45] 1.2 [0.9]
	100 [6.9]	GPM [l/min] HP [kw]		58 [220] 5.8 [4.3]	62 [235] 5.8 [4.3]	63 [238] 8.8 [6.6]	26 [98] 2.4 [1.8]	30 [114] 2.4 [1.8]	31 [117] 3.1 [2.3]	15 [57] 1.8 [1.3]	19 [72] 1.8 [1.3]	20 [76] 2.0 [1.5]	21 [79] 2.9 [2.2]	9 [34] 1.3 [1.0]	13 [49] 1.3 [1.0]	14 [53] 1.5 [1.1]	15 [57] 2.0 [1.5]	5 [19] 1.0 [0.7]	9 [34] 1.0 [0.7]	10 [38] 1.2 [0.9]	11 [42] 1.6 [1.2]
	200 [13.8]	GPM [l/min] HP [kw]			59 [229] 9.6 [7.2]	62 [235] 12.6 [9.4]		27 [102] 4.3 [3.2]	30 [114] 5.0 [3.7]		16 [61] 3.1 [2.3]	19 [72] 3.3 [2.5]	20 [76] 4.2 [3.1]		10 [38] 2.3 [1.7]	13 [49] 2.5 [1.9]	14 [53] 3.0 [2.2]		6 [23] 1.7 [1.3]	9 [34] 1.9 [1.4]	10 [38] 2.3 [1.7]
	300 [20.7]	GPM [l/min] HP [kw]				61 [231] 16.5 [12.3]		29 [110] 7.0 [5.2]			18 [68] 4.6 [3.4]	19 [72] 5.5 [4.1]			12 [45] 3.5 [2.6]	13 [49] 4.0 [3.0]			8 [30] 2.7 [2.0]	9 [34] 3.1 [2.3]	
29	50 [3.5]	GPM [l/min] HP [kw]		98 [371] 7.8 [5.8]	102 [386] 7.8 [5.8]	105 [397] 12.0 [8.9]	45 [170] 2.7 [2.0]	49 [185] 2.7 [2.0]	52 [197] 3.7 [2.8]	28 [106] 1.6 [1.2]	31 [117] 1.6 [1.2]	34 [129] 2.1 [1.6]	34.5 [131] 3.3 [2.5]	19 [72] 1.0 [0.7]	22 [83] 1.0 [0.7]	25 [95] 1.3 [1.0]	25.5 [97] 2.1 [1.6]	14 [5.3] 0.75 [0.6]	17 [64] 0.75 [0.6]	20 [76] 0.95 [0.7]	20.5 [78] 1.4 [1.0]
	100 [6.9]	GPM [l/min] HP [kw]		95 [360] 17.0 [12.7]	100 [379] 12.0 [8.9]	104 [394] 15.0 [11.4]	42 [159] 6.5 [4.8]	47 [178] 5.0 [3.7]	51 [193] 5.5 [4.1]	24 [91] 2.8 [2.1]	29 [110] 2.6 [1.9]	33 [125] 3.1 [2.3]	34.3 [130] 4.3 [3.2]	15 [57] 2.2 [1.6]	20 [76] 2.0 [1.5]	24 [91] 2.3 [1.7]	25.3 [96] 3.1 [2.3]		15 [57] 1.5 [1.1]	19 [72] 1.7 [1.3]	20.3 [77] 2.2 [1.6]
	200 [13.8]	GPM [l/min] HP [kw]			96 [363] 18.0 [13.4]	103 [390] 22.0 [16.4]		43 [163] 9.0 [6.7]	50 [189] 9.5 [7.1]		25 [95] 5.0 [3.7]	32 [121] 5.5 [4.1]	34.1 [129] 6.6 [4.9]		16 [61] 3.9 [2.9]	23 [87] 4.2 [3.1]	25.1 [95] 4.9 [3.7]		18 [68] 3.1 [2.3]	20.1 [76] 3.7 [2.8]	
	300 [20.7]	GPM [l/min] HP [kw]				102 [386] 29.0 [21.6]		49 [185] 13.5 [10.1]			31 [117] 8.5 [6.3]	34 [129] 9.6 [7.2]			22 [83] 5.9 [4.4]	25 [95] 6.6 [4.9]			20 [76] 5.1 [3.8]		
54	50 [3.5]	GPM [l/min] HP [kw]				83 [314] 4.5 [3.4]	93 [352] 4.5 [3.4]	100 [379] 6.2 [4.6]	50 [189] 3.1 [2.3]	60 [227] 3.1 [2.3]	67 [254] 3.7 [2.8]	68 [257] 5.3 [4.0]	31 [117] 2.4 [1.8]	41 [155] 2.4 [1.8]	49 [1] 3.8 [2.8]	22 [83] 1.5 [1.1]	32 [121] 1.5 [1.1]	39 [148] 1.9 [1.4]	40 [151] 2.8 [2.1]		
	100 [6.9]	GPM [l/min] HP [kw]				71 [269] 12.0 [8.9]		40 [151] 5.1 [3.8]	54 [204] 4.9 [3.7]	65 [246] 5.6 [4.2]	67 [254] 7.3 [5.4]	20 [76] 3.8 [2.8]	35 [132] 3.6 [2.7]	46 [174] 4.0 [3.0]	48 [182] 5.0 [3.7]	26 [98] 2.8 [2.1]	37 [140] 3.1 [2.3]	39 [148] 4.0 [3.0]			
	200 [13.8]	GPM [l/min] HP [kw]						44 [167] 9.6 [7.2]	62 [235] 11.0 [8.2]	66 [250] 12.0 [8.9]		25 [95] 7.5 [5.6]	43 [163] 8.0 [6.0]	47 [178] 9.0 [6.7]		35 [132] 5.8 [4.3]	38 [144] 6.2 [4.6]				
	300 [20.7]	GPM [l/min] HP [kw]						60 [227] 16.0 [11.9]	65 [246] 17.0 [12.7]			40 [151] 11.0 [8.2]	46 [174] 12.0 [8.9]			37 [140] 9.0 [6.7]					
75	50 [3.5]	GPM [l/min] HP [kw]						65 [246] 3.8 [2.8]	77 [291] 3.8 [2.8]	86 [326] 4.5 [3.4]	88 [333] 7.0 [5.2]	43 [163] 3.0 [2.2]	54 [204] 3.0 [2.2]	67 [254] 3.6 [2.7]	67 [254] 5.1 [3.8]	40 [151] 2.2 [1.6]	49 [185] 2.7 [2.0]	52 [197] 3.6 [2.7]			
	100 [6.9]	GPM [l/min] HP [kw]						49 [185] 7.5 [5.6]	68 [257] 7.0 [5.2]	83 [314] 8.5 [6.3]	87 [329] 10.0 [7.5]	27 [102] 5.8 [4.3]	46 [174] 5.6 [4.2]	61 [231] 6.0 [4.5]	66 [250] 8.0 [6.0]	31 [117] 4.2 [3.1]	47 [178] 4.7 [3.5]	51 [193] 5.6 [4.2]			
	200 [13.8]	GPM [l/min] HP [kw]						52 [197] 13.0 [9.7]	79 [299] 14.0 [10.4]	86 [326] 16.0 [11.9]		30 [114] 9.5 [7.1]	57 [215] 10.0 [7.5]	65 [246] 11.0 [8.2]		42 [159] 7.6 [5.7]	50 [189] 8.6 [6.4]				
	300 [20.7]	GPM [l/min] HP [kw]						76 [288] 20.0 [14.9]	85 [322] 22.0 [16.4]			54 [204] 15.0 [11.2]	64 [242] 16.0 [11.9]			49 [185] 13.0 [9.7]					

DIMENSIONS

SIZE 19 THROUGH 29

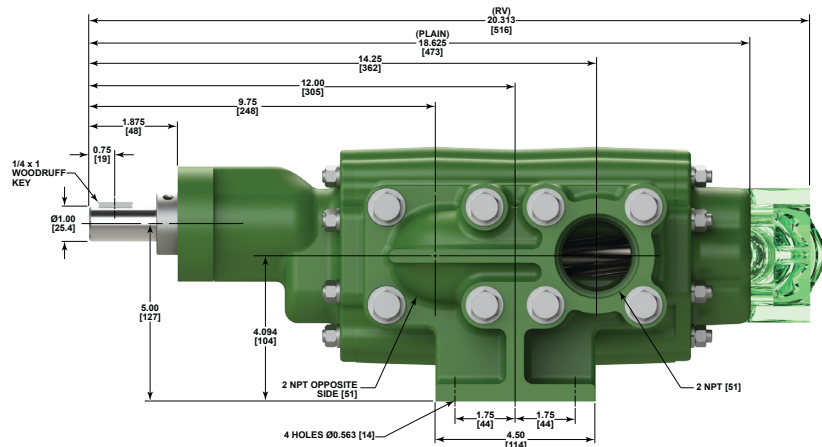
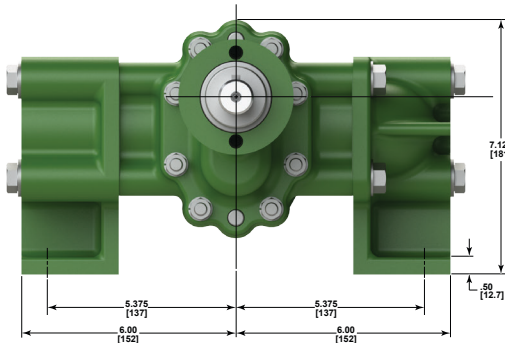
Foot Mounted

Pump	B	C	F	N-M	R	S
1AE-19	3 [76]	12-5/8 [321]	1 [25]	9 [229]		1-1/2 [38]
2AE-19	3 [76]		1 [25]	9 [229]	14-13/16 [376]	1-1/2 [38]
1AE-29	4-1/2 [114]	14-1/8 [359]	1-3/4 [44]	9-3/4 [248]		2 [51]
2AE-29	4-1/2 [114]		1-3/4 [44]	9-3/4 [248]	15-13/16 [402]	2 [51]



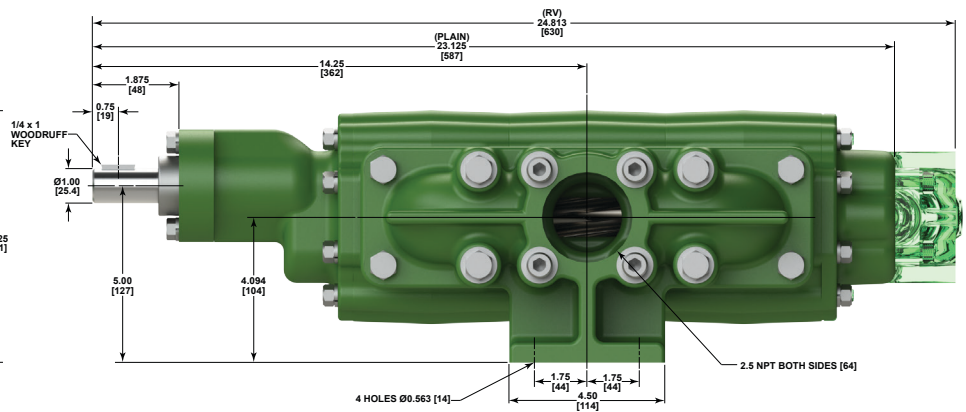
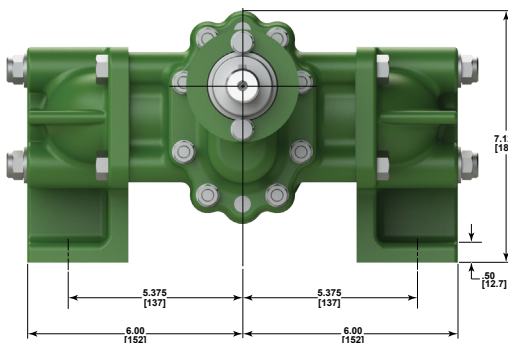
SIZE 54

Foot Mounted



SIZE 75

Foot Mounted





THE LEADING FORCE behind liquids™ since 1857

Roper Pump Company is a global supplier of high quality positive displacement pumps, designed to handle a broad range of industrial applications.

In addition to helical gear pumps and progressing cavity pumps, we design and develop numerous custom pumps for customers with unique and demanding applications.

From a small pump company founded in 1857, Roper Pump Company has grown into a technological leader. With a large installed base, we have both the knowledge and experience to help you solve your most challenging pumping problems...and our strong global distribution network ensures that your needs are met on time, every time.



Industrial

Roper Pump Company's rugged and dependable range of positive displacement pumps provides versatile pumping solutions for even the most challenging industrial applications.



Transport

With over a century of experience in liquid cargo transfer, Roper Pump Company has always been trusted to load and unload your tankers quickly and safely.



Power Gen.

For reliable operation of engines, compressors and turbines, thousands of customers depend on Roper Pump Company fuel pumps, lube pumps and liquid fuel flow dividers.

Roper Pump Company

PO Box 269
Commerce, GA 30529 USA

Office: (706) 335-5551
Fax: (706) 335-5490

sales@roperpumps.com
www.roperpumps.com

©2023 by Roper Pump Company

Roper Pumps® is a registered trademark of Roper Pump Company.

THE LEADING FORCE behind liquids™ is a trademark of Roper Pump Company

DOC# PB-A-SERIES-2023-REV1

DISCLAIMER

The information contained within this brochure and the functions offered is intended to provide information about products available for purchase from Roper Pump Company. All reasonable efforts have been made to ensure the accuracy of the information. Under no circumstances shall Roper Pump Company be liable to any party for any damage, whether direct, indirect, special or other consequential damages, for any use of, reference to or reliance on this brochure or its contents - including, but not limited to - any errors or unexpected un-fulfillment of shipments, any loss of profits, or business interruption. Roper Pump Company reserves the right to make changes to the brochure and the product functions at any time without notice.