



Every Accessory for Fluid Handling

We Can Ensure that Your System Will Be More Accurate, Run Safer and Last Longer



Griffco is your comprehensive resource for chemical feed accessories designed to complement your primary pumping equipment. Featuring robust construction—machined, molded, or cast—for the rigorous demands of municipal and industrial applications, they are engineered to enhance the safety, performance, and longevity of your process system.



One source is all you need to equip your chemical feed or pumping system properly. We have an unmatched selection of products to meet your operating specifications and large in-stock availability for shipments to meet your schedule.

More than 1 Million Valves and System Accessories in the Field Since 1992

Offering simple, reliable product designs in compact sizes, Griffco accessories are easy to install and maintain. For nearly 30 years, pump manufacturers and processing facilities worldwide have been depending on Griffco to provide expert service and support. An exceptional warranty backs our products.

“Quick Turnaround Advantage”

Griffco has a 98% track record for on-time product delivery, but that is only one aspect of our Quick Turnaround Advantage. In every aspect of your working with us, our entire team of factory professionals and trained representatives strive to bring their best whenever called upon.

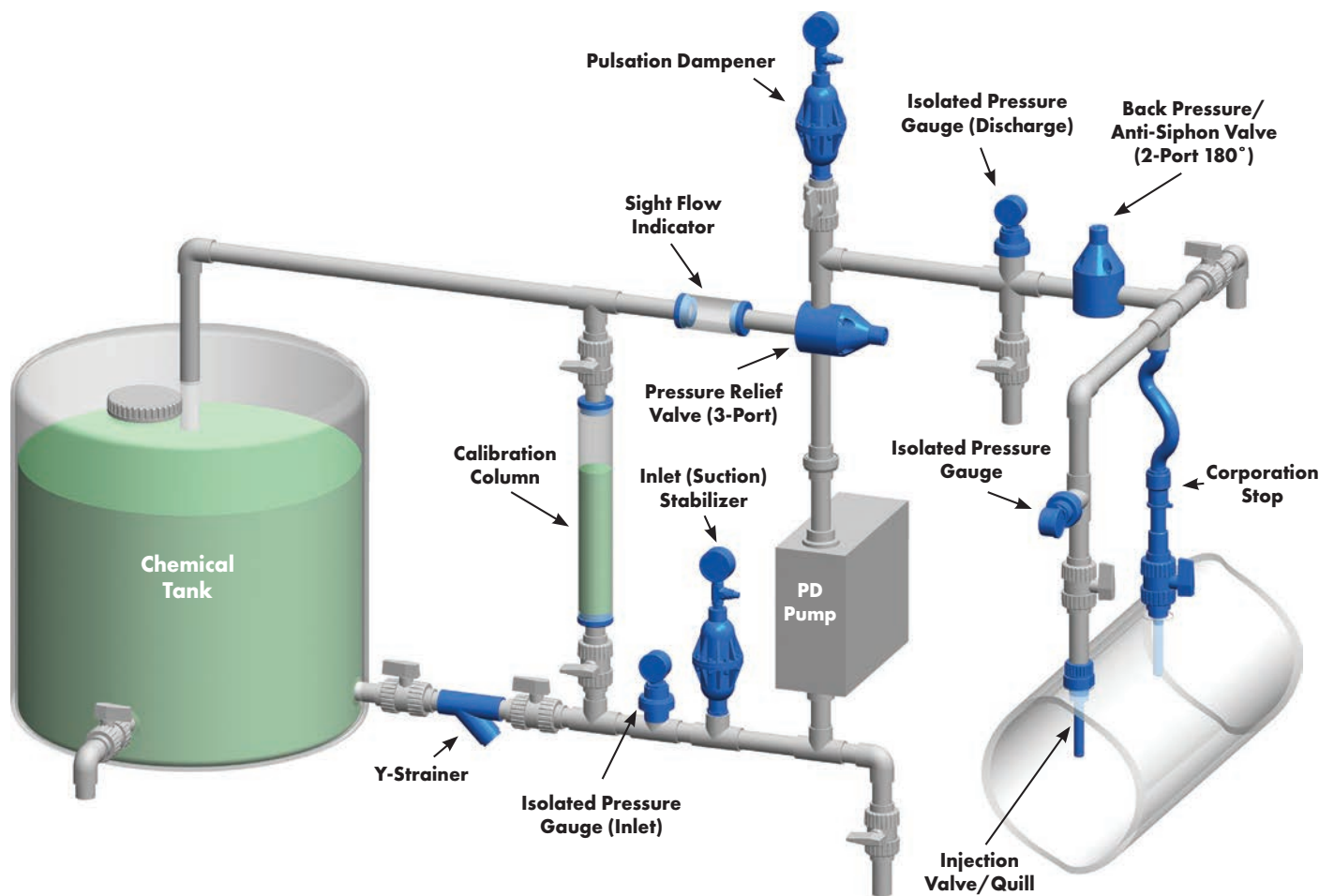
- Dedicated Customer Focus
- Personal Contact and Commitment
- Fast Quotation Preparation
- Application Assistance
- Technical Support
- Expedient Shipping
- World Class Product Support
- Product Documentation
- Project Submittals
- Custom Designs
- Special Packaging
- Testing and Material Certifications
- Special Machining and Workmanship
- Private Labeling
- Multilingual Service
- Responsive Action

Typical Installation Featuring Griffco Accessories

Griffco offers a comprehensive line of fluid handling accessories for applications in municipal and industrial water and wastewater treatment, power generation, chemical, petrochemical, and pharmaceutical processing, oil and gas and refinery operations, select food and beverage processes, pulp and paper mills, agriculture, biofuels, mining, paints and coatings, metals and plating, plastics, resins, and rubber goods, polyurethane processing, and other industries.

The illustration below is one example of a typical pumping system. Other configurations are also common. If there is an accessory that you require not shown below or described in this catalog, contact us. We can work with you to make sure that your system is completed with every accessory you need.

| Product Line | Page |
|--|------|
| Back Pressure Valves | 4 |
| Pressure Relief Valves | 6 |
| Calibration Columns | 8 |
| Pulsation Dampeners/ Inlet Stabilizers/ Surge Suppressors | 9 |
| Injection Valves/ Quills | 10 |
| Corporation Stops | 11 |
| Gauge & Instrument Guards | 12 |
| Fusion Dampeners | 13 |
| Y-Strainers | 13 |
| Other Accessories | 14 |



Contact us for 3D CAD drawings, dimensional drawings, performance curves, and ordering information.

Back Pressure Valves

Griffco diaphragm back pressure valves apply a minimum constant positive discharge pressure to a pumping system. This prevents siphoning and eliminates the variance of dosage rates to help stabilize the downstream pressure.

They ensure that certain types of pumps deliver consistent flows or allow for high accuracy and stable operation. Griffco back pressure valves are also known as loading valves or anti-siphon valves.

Standard Features

- Molded Noryl® top expands the temperature and pressure maximum ratings compared to standard plastic valves.
- G-Series 3" and 4" size valves feature PVC tops.
- Optional 316L Stainless Steel metal top available for valves with metal bodies; pressure ratings up to 350 psi (24 bar).
- Robust construction ensures greater reliability in the rigorous service of municipal and industrial processing applications.
- Anti-siphon function.
- Variety of maximum pressure rated springs available depending on model.
- Long-lasting diaphragms (PTFE/EPDM standard; others optional).
- Variety of sizes, connection styles, and a wide range of plastic and metal materials of construction available.
- Compact size for OEM installations.
- Factory or field settable.



Optional model ARV air release valve acts as a priming valve and/or a degassing valve for M-Series and G-Series back pressure valves.



Body Materials

- PVC
- CPVC
- Polypropylene
- PVDF
- PTFE
- Halar®
- 316L SS
- Alloy 20
- Hastelloy® C
- Titanium

Connections

- Threaded
- Socket
- Union
- Flanged
- "Griffflare" fittings for connection to PFA tubing

Diaphragm Materials

- EPDM/PTFE (standard)
- FKM (Viton®)
- CSM (Hypalon®)
- PTFE/FKM
- FFKM (Kalrez®)

Spring Ranges

- 10 to 150 psi (1 to 10 bar) standard
- 0 to 50 psi (0 to 3.5 bar)
- 10 to 250 psi (1 to 17 bar)
- 50 to 350 psi (3.5 to 24 bar)

Configurations

- 2-port 180°
- 2-port 90°
- Wall mount

Options

- Priming port
- Adjustment knob
- Tamper-resistant wire
- Metal adjustment screw
- BPI/PRI gauge isolator
- Material certifications

M-Series Low Flow

Port Sizes: 1/4" to 1/2" (DN 8 to DN 15)

Maximum Ratings

Pulsating Flow: 100 to 300 gph (378 to 1,135 lph)

Continuous Flow: 5 to 15 gpm (19 to 57 lpm)

Pressures up to: 350 psi (24 bar)

Available with flanges for 1/2" (DN 15) size.

High-temperature option up to 300°F (149°C).



G-Series Medium Flow

Port Sizes: 1/2" to 4" (DN 15 to DN 100)

Maximum Ratings

Pulsating Flow: 320 to 5,157 gph (1,211 to 19,521 lph)

Continuous Flow: 17 to 270 gpm (63 to 1,020 lpm)

Pressures up to: 250 psi (17 bar) plastic

350 psi (24 bar) metal

Available with flanges for all sizes.

High-temperature option up to 300°F (149°C).



High Flow Series

Port Sizes: 1/2" to 2" (DN 15 to DN 50)

Maximum Ratings

Pulsating Flow: 600 to 5,157 gph (2,271 to 19,521 lph)

Continuous Flow: 30 to 270 gpm (114 to 1,020 lpm)

Pressures up to: 250 psi (17 bar)

Available with flanges for all sizes.

High-temperature option up to 300°F (149°C).



Medium Pressure Series

Port Sizes: 1/4" to 1" (DN 8 to DN 25)

Maximum Ratings

Pulsating Flow: 250 to 1,060 gph (946 to 4,012 lph)

Continuous Flow: 13 to 56 gpm (49 to 211 lpm)

Pressures up to: 800 psi (55 bar)

Available with flanges for 1/2" (DN 15), 3/4" (DN 20), and 1" (DN 25) sizes.

316L SS, A20, Hastelloy® C, and Titanium body material options.



Unibody Leak-free Connections

Port Sizes: 1/2" to 1" (DN 15 to DN 25)

Maximum Ratings

Pulsating Flow: 260 to 500 gph (984 to 1,890 lph)

Continuous Flow: 15 to 26 gpm (57 to 98 lpm)

Pressures up to: 250 psi (17 bar)

Single-piece PVC or CPVC body with no seals or glued connections.



G-Series Solid PTFE Flanged

Port Sizes: 1/2" to 1" (DN 15 to DN 25)

Maximum Ratings

Pulsating Flow: 320 to 462 gph (1,211 to 1,749 lph)

Continuous Flow: 17 to 24 gpm (63 to 92 lpm)

Pressures up to: 150 psi (10 bar)

Single-piece, leak-free PTFE body.

High-temperature option up to 300°F (149°C).



Pressure Relief Valves

Griffco diaphragm pressure relief valves protect pumps, systems, or tanks from an upset condition (e.g., pressure spike, over pressurization, closed valve) caused by defective equipment or a blockage in the chemical feed line.

The valve is normally closed, but it will open (operate) when the pressure exceeds a preset value. This allows the excess pressure to be bypassed and safely discharged into a reservoir or back into the inlet piping.

Also known as safety valves or bypass valves, Griffco pressure relief valves maximize system uptime and ensure proper function for all ancillary devices connected.

Standard Features

- Molded Noryl® top expands the temperature and pressure maximum ratings compared to standard plastic valves.
- Optional 316L Stainless Steel metal top available for valves with metal bodies; pressure ratings up to 350 psi (24 bar).
- Robust construction ensures greater reliability in the rigorous service of municipal and industrial processing applications.
- Variety of maximum pressure rated springs available depending on model.
- Long-lasting diaphragms (PTFE/EPDM standard; others optional).
- Variety of sizes, connection styles, and a wide range of plastic and metal materials of construction available.
- Compact size for OEM installations.
- Factory or field settable.



Griffco plastic pressure relief valves are available with an optional pressure switch that features an alarm. Sizes from 1/4" to 1" (DN 8 to DN 25).

Body Materials

- PVC
- CPVC
- Polypropylene
- PVDF
- PTFE
- Halar®
- 316L SS
- Alloy 20
- Hastelloy® C
- Titanium

Connections

- Threaded
- Socket
- Union
- Flanged

Diaphragm Materials

- EPDM/PTFE (standard)
- FKM (Viton®)
- CSM (Hypalon®)
- PTFE/FKM
- FFKM (Kalrez®)

Spring Ranges

- 10 to 150 psi (1 to 10 bar) standard
- 0 to 50 psi (0 to 3.5 bar)
- 10 to 250 psi (1 to 17 bar)
- 50 to 350 psi (3.5 to 24 bar)
- 100 to 800 psi (7 to 55 bar)
- 350 to 2000 psi (24 to 138 bar)
- 350 to 4000 psi (24 to 275 bar)

Configurations

- 3-port 180° (up to 1" / DN 25) standard
- 2-port 180°
- 2-port 90°
- Wall mount

Options

- Adjustment knob
- Tamper-resistant wire
- Metal adjustment screw
- BPI/PRI gauge isolator
- Material certifications

M-Series Low Flow

Port Sizes: 1/4" to 1/2" (DN 8 to DN 15)

Maximum Ratings

Pulsating Flow: 100 to 300 gph (378 to 1135 lph)

Continuous Flow: 5 to 15 gpm (19 to 57 lpm)

Pressures up to: 350 psi (24 bar)

Available with flanges for 1/2" (DN 15) size.

High-temperature option up to 300°F (149°C).



G-Series Medium Flow

| | |
|------------------|--|
| Port Sizes: | 1/2" to 4" (DN 15 to DN 100) |
| Maximum Ratings | |
| Pulsating Flow: | 320 to 5,157 gph (1,211 to 19,521 lph) |
| Continuous Flow: | 17 to 270 gpm (63 to 1,020 lpm) |
| Pressures up to: | 250 psi (17 bar) plastic 350 psi (24 bar) metal |

Available with flanges for all sizes.

High-temperature option up to 300°F (149°C).



High Flow Series

| | |
|------------------|--|
| Port Sizes: | 1/2" to 2" (DN 15 to DN 50) |
| Maximum Ratings | |
| Pulsating Flow: | 600 to 5,157 gph (2,271 to 19,521 lph) |
| Continuous Flow: | 30 to 270 gpm (114 to 1,020 lpm) |
| Pressures up to: | 250 psi (17 bar) |

Available with flanges for all sizes.

High-temperature option up to 300°F (149°C).



Medium Pressure Series

| | |
|------------------|-------------------------------------|
| Port Sizes: | 1/4" to 1" (DN 8 to DN 25) |
| Maximum Ratings | |
| Pulsating Flow: | 250 to 1,060 gph (946 to 4,012 lph) |
| Continuous Flow: | 13 to 56 gpm (49 to 211 lpm) |
| Pressures up to: | 800 psi (55 bar) |

Available with flanges for 1/2" (DN 15), 3/4" (DN 20), and 1" (DN 25) sizes.

316L SS, A20, Hastelloy® C, and Titanium body material options.



High Pressure Series

| | |
|------------------|---------------------------------------|
| Port Sizes: | 1/4" to 1" (DN 8 to DN 25) |
| Maximum Ratings | |
| Pulsating Flow: | 700 to 1,200 gph (2,650 to 4,542 lph) |
| Continuous Flow: | 35 to 60 gpm (132 to 227 lpm) |
| Pressures up to: | 4000 psi (275 bar) |

Available with flanges for 1/2" (DN 15), 3/4" (DN 20), and 1" (DN 25) sizes.

316L SS, A20, Hastelloy® C, and Titanium body material options.



Unibody Leak-free Connections

| | |
|------------------|-----------------------------------|
| Port Sizes: | 1/2" to 1" (DN 15 to DN 25) |
| Maximum Ratings | |
| Pulsating Flow: | 260 to 500 gph (984 to 1,890 lph) |
| Continuous Flow: | 15 to 26 gpm (57 to 98 lpm) |
| Pressures up to: | 250 psi (17 bar) |

Single-piece PVC or CPVC body with no seals or glued connections.



G-Series Solid PTFE Flanged

| | |
|------------------|-------------------------------------|
| Port Sizes: | 1/2" to 1" (DN 15 to DN 25) |
| Maximum Ratings | |
| Pulsating Flow: | 320 to 462 gph (1,211 to 1,749 lph) |
| Continuous Flow: | 17 to 24 gpm (63 to 92 lpm) |
| Pressures up to: | 150 psi (10 bar) |

Single-piece, leak-free PTFE body.

High-temperature option up to 300°F (149°C).



Calibration Columns

Griffco calibration columns are designed to enhance the performance of a chemical feed system by providing a verification of the flow rate of the chemical feed pump. Also known as calibration cylinders or calibration pots, Griffco calibration columns provide a high level of accuracy and are available in PVC or borosilicate glass.

Standard Features

- Clear, easy-view tube.
- High contrast graduated markings.

Connections



- Threaded (standard)
- Socket
- Flanged
- Union

Options

- Calibration column stand
- Calibration column fluid level indicators
- Custom labels
- Material certifications

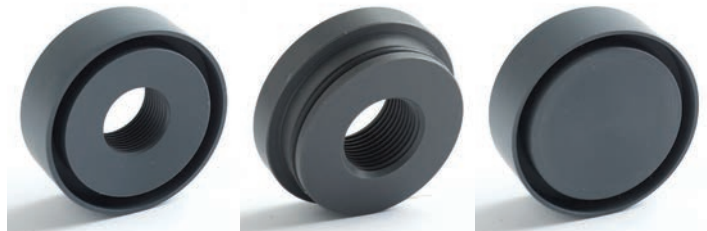


PVC Models

- Sizes from 100mL to 40,000mL.
- PVC end caps standard; CPVC end caps optional.
- Three top options: sealed with vent, EZ-Clean, and dust cap.



PVC Configurations



Sealed with vent

EZ-Clean

Dust cap

Glass Models

- Sizes from 30mL to 20,000mL.
- Imperial (gph) and metric (mL) scales.
- Easy disassembly for cleaning.
- Protective outer shield (except 10K and 20K models).



End Cap Materials for Glass Columns

- PVC
- CPVC
- Polypropylene
- PVDF
- PTFE
- Halar®
- 316L SS
- Alloy 20
- Hastelloy® C

Pulsation Dampeners, Inlet (Suction) Stabilizers & Surge Suppressors



Griffco pulsation dampeners are designed to deliver continuous chemical dosages at the injection point. They create an area of low pressure in a system to absorb the energy from the pulse wave created by a positive displacement pump. This reduces harmful shock waves and can produce fluid flow up to 99% vibration and pulsation free to protect the system.

Pulsation dampeners are placed on the discharge side of the pump to allow for laminar flow downstream from the dampener. When placed on the inlet side of the pump, it acts as an inlet or suction stabilizer to reduce inlet shock, acceleration head losses, and inlet cavitation. When placed next to a valve or other accessory that restricts flow in a system, it is known as a suction accumulator or surge suppressor.

Standard Features

- Volumetric sizes from 6 to 320 cubic inches (additional sizes available on request).
- Operating pressures for metal units up to 1250 psi (86 bar); higher pressures available on request.
- Operating pressures for plastic units up to 150 psi (10 bar); optional up to 250 psi (17 bar).
- Available with charging kits.

Materials of Construction

- Body: Noryl®, PVC, CPVC, PVDF, Polypropylene, 316L SS, Alloy 20, Hastelloy® C
- Diaphragm: EPDM (standard); FKM (Viton®), CSPE (Hypalon®) & PTFE (optional)
- Gauge & Charging Valves: Brass (standard); 316L SS (optional)

Connections

- Sizes: 1/2", 3/4", 1" & 2" (DN 15, DN 20, DN 25, DN 50)
- Types: NPT, BSPT, Socket, Union, Flanged

Pressure Ranges

- Metal: 0 to 300 psi (0 to 21 bar) and 0 to 1250 psi (0 to 86 bar); higher pressures available on request
- Plastic: 0 to 150 psi (10 bar) standard; 0 to 250 psi (0 to 17 bar) optional

Maximum Temperatures

- PVC: 140 °F (60 °C)
- CPVC: 175 °F (79 °C)
- Polypropylene: 175 °F (79 °C)
- PVDF: 225 °F (107 °C)
- Noryl: 225 °F (107 °C)
- Metals: dependent on bladder material (contact factory)



Metal dampeners have a pressure range up to 1250 psi (86 bar); higher pressures optionally available.

Plastic dampeners have a pressure range up to 150 psi (10 bar); optionally available up to 250 psi (17 bar).

Chemical Injection Valves & Quills



Griffco injection valves and injection quills are designed to ensure that chemical feed systems inject into the center of a process stream for improved mixing. Passage of a liquid from a feed line into the center of a process line will also keep the chemical off the wall of the tank or pipe, preventing corrosion.

A Griffco ICV features an integral valve that is serviceable and replaceable, resulting in lower ownership costs. A Griffco IVQ features a true check valve for higher pressure applications and lower acquisition costs.

Standard Features & Options (ICV & IVQ)

- Integral check valve.
- Multiple check ball options (SS, PTFE, Hastelloy® C).
- Hastelloy® C spring standard; PTFE-coated Hastelloy® spring optional.
- Quill stiffener option for plastic construction.
- Custom quill lengths.
- Wide range of wetted materials.
- Optional flanged connection.

Materials of Construction

- PVC
- CPVC
- Polypropylene (ICV Serviceable only)
- PVDF
- 316 SS
- Alloy 20
- Hastelloy® C

ICV Injection Valves/Quills (Serviceable)

- Connection sizes from 1/2" to 2" (DN 15 to DN 50) MNPT or Male BSPT
- Connection types include Threaded (Male and Female options) or Socket (plastic materials only)
- Pressures up to 250 psi (17 bar) plastic
- Pressures up to 350 psi (24 bar) metal
- Union connection interface for servicing
- Seal options include EPDM and FKM (Viton®)
- Flat or 45° angle tip options



ICV models have a fast union disconnect for easy servicing.

IVQ Injection Valves/Quills

- Connection sizes from 1/2" to 1" (DN 15 to DN 25) MNPT or Male BSPT
- Pressures up to 150 psi (10 bar) plastic
- Pressures up to 3500 psi (241 bar) metal
- 45° angle tip standard
- Features quill angle indicator



IVQ high-pressure models in 316 Stainless Steel.

Corporation Stops



Griffco corporation stops (corp stops) operate like injection valves to ensure that chemical feed systems inject into the center of a process stream. The difference is that corporation stops are retractable and feature a shut-off (ball) valve and radial seal to allow for the injector quill to be removed for servicing without turning off the process flow.

An integral check valve prevents the process fluid from going back up the chemical line. A locking mechanism ensures that the quill does not slide out from system pressure, and a locking chain stops the quill from sliding all the way out when being serviced. With limited seals and joints, Griffco corporation stops provide virtually leak-free performance.

Standard Features

- Process connections from 3/4" to 1-1/4" (DN 20 to DN 32).
- Quill connections from 1/2" to 1" (DN 15 to DN 25).
- Pressures up to 150 psi (10 bar).
- Compact assembly for easier access and positioning.
- Fast and easy union disconnect for servicing.
- Standard tip configuration is flat; other options available.
- FKM (Viton®) o-ring/gasket standard; EPDM optional.
- Variable-length 316 SS locking quill chain.
- 6" quill length standard; others by request.

Connections

- Plastic Union Threaded
- Union Socket

Quill Materials

- PVC
- CPVC
- PVDF
- 316 SS
- Alloy 20
- Hastelloy® C

Ball Valve Materials

- PVC
- CPVC
- PVDF
- 316 SS
- Alloy 20 (and other alloys)
- Brass

Options

- 45° beveled tip (metal or plastic models) or poppet (plastic models only)
- Numerous ball valve and quill material choices
- Quill sleeve for plastic quills
- Redundant quill lock
- Check valve
- Material certifications for metals



An optional poppet can minimize chemical build-up and improve chemical dispersion.

Gauge & Instrument Guards



The addition of gauges to a chemical-feed system ensures that optimal pressures are maintained. Diaphragm isolators protect instruments against chemical attack. They are also known as pressure gauge isolators.

Standard Features

- Gauge accuracy of $\pm 2\%$ (can be ordered with or without gauge).
- Features molded Noryl[®] top, 316L SS gauge connection, and FKM (Viton[®]) o-ring material.
- Will perform in any position and includes calibration screw for zeroing.
- Sizes of 1/4", 3/8" and 1/2" (DN 8, DN 10, DN 15) in NPT, BPST, Union, or Flanged process connections.
- Gauge port sizes of 1/4" standard; 1/8" and 1/2" optional.
- FKM (Viton[®]) diaphragm material standard; PTFE, CSM (Hypalon[®]), and FKM (Kalrez[®]) optional.

Body Materials

- PVC
- CPVC
- Polypropylene
- PVDF
- 316L SS

Maximum Temperatures

- PVC: 140° F (60° C)
- CPVC: 190° F (87° C)
- Polypropylene: 190° F (87° C)
- PVDF: 300° F (149° C)
- 316L SS: (contact factory)

Gauge Options

- No gauge
- Economy gauge: Brass case with Brass connection
- Mid-range gauge: 304 SS gauge case with Brass connection
- Premium gauge: 304 SS gauge case with 316 SS connection, glycerin-filled

Pressure Range Options

- 0 to 160 psi (0 to 11 bar) standard
- 0 to 60 psi (0 to 4 bar)
- 0 to 100 psi (0 to 7 bar)
- 0 to 200 psi (0 to 14 bar)
- 0 to 300 psi (0 to 21 bar)



Diaphragm isolators can be ordered without the gauge.

Fusion Dampeners

Griffco fusion dampeners combine the proven technologies of Griffco back pressure valves and pulsation dampeners into one space-saving unit. This simplifies installation and reduces process connections. Fusion dampeners provide smooth, laminar flow through the unit downstream and protection against over-pressurization.

Standard Features

- 2 volumetric sizes of 6 and 10 cubic inches.
- Operating pressures to 150 psi (10 bar).
- Combines back pressure function with pulsation dampening.
- Space-saving design offers installation flexibility.

Materials of Construction

- Body: PVC, CPVC, Polypropylene and PVDF
- Diaphragm: EPDM (standard); FKM (Viton®), CSM (Hypalon®), and PTFE optional
- Gauge & Charging Valves: Brass (standard); 316L SS optional

Connections

- Sizes: 1/4", 3/8" & 1/2" (DN 8, DN 10, DN 15)
- Types: NPT, BSPT Socket, Union

Maximum Temperatures

- PVC: 140°F (60°C)
- CPVC: 195°F (91°C)
- Polypropylene: 195°F (91°C)
- PVDF: 300°F (149°C)

Gauges

- Standard: 0 to 160 psi (0 to 11 bar)
- Optional: 0 to 60 psi (0 to 4 bar), 0 to 100 psi (0 to 7 bar), 0 to 200 psi (0 to 14 bar)
- Port Size: 1/8" (DN 4)



Y-Strainers



When added to the suction (inlet) side of a chemical-feed pump, a Griffco y-strainer prevents debris from entering the pump and clogging the check valves or damaging the interior of the pump head. They are available in metal and plastic models.

Standard Features

- Horizontal or vertical installation.
- 2:1 open area ratio.
- Hex cap for easy access.
- Standard screen perforation: 1/32" (plastic or metal); 1/16", 1/8", 3/16" also available.
- Metal mesh sizes from 20 to 325 (other mesh sizes available on request).

Materials of Construction

- PVC
- Clear PVC
- CPCV
- PVDF
- 316 SS

Connections

- Sizes: 1/2" to 2" (DN 15 to DN 50)
- Types: NPT, BSPT, Socket, Union, Flanged

Maximum Temperatures

- PVC: 140°F (60°C)
- Clear PVC: 140°F (60°C)
- CPVC: 190°F (87°C)
- PVDF: 190°F (87°C)
- 316 SS: 400°F (204°C)

Other Fluid Handling Accessories from Griffco

Griffco manufactures other accessories to support all chemical feed and pumping system requirements. These accessories complement our core products and serve customers with the same quality, delivery, and customer satisfaction expectations of our mainstay product lines.

Accessory Selection

- Sight Flow Indicators
- Air Release Valves
- Check Valves
- Calibration Column Stands
- Calibration Column Fluid Level Indicators
- Corporation Stop Sleeves
- Degassing Valves
- Strainers
- Pulsation Dampener Charging Kits
- Spare Parts Kits

Sight Flow Indicators – Provide visual verification of the fluid flow.



Air Release Valves – Act as a priming valve and/or a degassing valve for M-Series and G-Series back pressure valves.



Check Valves (One-way Valves) – Normally closed, automatically re-seats after liquid passes through to prevent the liquid from going backward. Griffco uses only ball checks with high sphericity to ensure no leakage and proper seating is achieved.



Corporation Stop Sleeves – Cover the plastic injection quill of a corporation stop to provide added stability and protection.



Pulsation Dampener Charging Kits – Used to pre-charge each dampener in your system and ensure they are set to the proper specifications.



Spare Parts Kits – Available to provide routine maintenance and service for Griffco back pressure and pressure relief valves.

If there is another accessory that you need, contact Griffco.

Griffco Quality Standards and Capabilities

Independent Certifications



9001:2015

Griffco products are manufactured in an ISO-certified facility, the worldwide standard for quality principles and procedures.



We have a Canadian Quality Certificate to CSA-B51-03, Annex F standards with Canadian Registration Numbers for Ontario and Alberta.



We have an NSF-61 certificate for most of our PVC valves. Visit GriffcoValve.com/griffco-quality-certifications to link to the NSF list.



We are certified to the Pressure Equipment Directive 2014/68/EU Annex III Module D.

Additional Compliance

- ARRA
- Material Certifications
- Dimensional Drawings
- Material Test Reports
- Certificate of Origin
- Certificate of Conformance
- Project Documentation
- Export Controls

Capabilities

- High Alloy Materials
- Engineered Composites
- System Assessments
- Product Training
- Global Fulfillment
- Multilingual
- EPC and Project Execution
- Various Pressure Ranges
- System Integration
- Private Labeling

Testing

- Acceptance
- Hydrostatic
- Flow and Pressure
- Witness
- PMI (Positive Material Identification)
- Radiographic
- Hardness

Customization

- Special Machining
- Custom Designs
- Welding and Fusion Welding
- In-house Conversions
- Special Packaging
- Special Connections
- Various Housing Materials
- Custom Nameplates





With corporate offices, engineering, and manufacturing facilities in Western New York, Griffco products are sold worldwide through our valued channel partners. For more information and expert assistance, contact us today for the name and location of the distributor or representative nearest to you.



Every Accessory for Fluid Handling

Griffco Valve, Inc.

188 Creekside Drive

Amherst, NY 14228 USA

Toll-Free (USA): 1-800-GRIFFCO (1-800-474-3326)

Phone (International): +1-716-835-0891

Fax: +1-716-835-0893

Email: sales@griffcovalve.com

GriffcoValve.com