

Air-Operated Double Diaphragm Pumps

ChemSafe™ Chemical Pumps

Our ChemSafe pumps are available with 100% PTFE or UHMWPE corrosion and abrasion-resistant fluid paths, making them ideal for even the most challenging fluids. They also have no exposed metals and can be configured in various materials to meet most abrasion, temperature and chemical compatibility requirements.

Leak Free Design

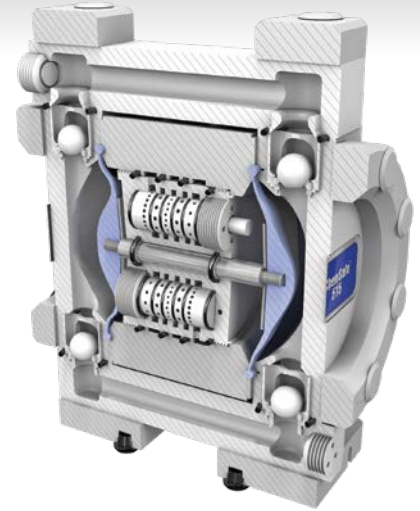
- Dual force, tie-bolt design ensures chemical containment
- Precision fit, CNC machined design

Corrosion-Resistance

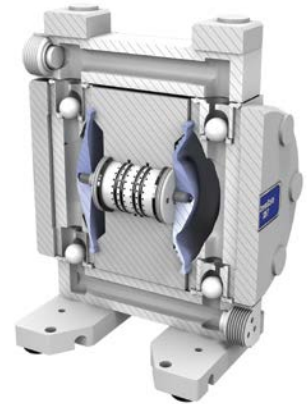
- 100% PTFE and UHMWPE fluid paths
- No exposed metals

Parallel Pilot Shifting

- Easy to maintain
- Stall-free design
- Reduced icing air system



ChemSafe Models: 515, 1040, 1590



ChemSafe Models: 205, 307



ChemSafe 1590
1-1/2 in (38.1 mm)
99.5 gpm (376 lpm)

ChemSafe 1040
1 in (25.4 mm)
38.8 gpm (146 lpm)

ChemSafe 515
1/2 in (12.7 mm)
16 gpm (60.6 lpm)

ChemSafe 307
3/8 in (9.4 mm)
6.7 gpm (25 lpm)

ChemSafe 205
1/4 in (6.3 mm)
3.7 gpm (14 lpm)

Choose the Right Material for Your Pump

Graco is making it easy to select a pump that's right for you. Go to www.graco.com/ChemicalGuide to see what pump material you should use with your chemicals.

	Fluoropolymer	PTFE	UHMWPE
Aluminum	+	+	+
Carbon Steel	+	+	+
Cast Iron	+	+	+
316 Stainless	+	+	+
304 Stainless	+	+	+
302 Stainless	+	+	+
403 Stainless	+	+	+
Inconel C	+	+	+
Nickel	+	+	+
CuW (Zirconium)	+	+	+
CPVC	+	+	+
Fluorocarbon (FFCM)	+	+	+
Fluoropolymer (FPM)	+	+	+
Natural Rubber (NR)	-	-	-
Neoprene (CR)	-	-	-
Hydro (HN)	-	-	-
Nitrile (N)	-	-	-
Leather	-	-	-
Natural Rubber	-	-	-
Butyl (IR)	-	-	-
Nylon	-	-	-
Polyethylene (PE)	-	-	-
Polycarbonate (PC)	-	-	-
Polycarbonate (PC/ABS)	-	-	-
Polypropylene	-	-	-

Example of Chemical Compatibility Guide